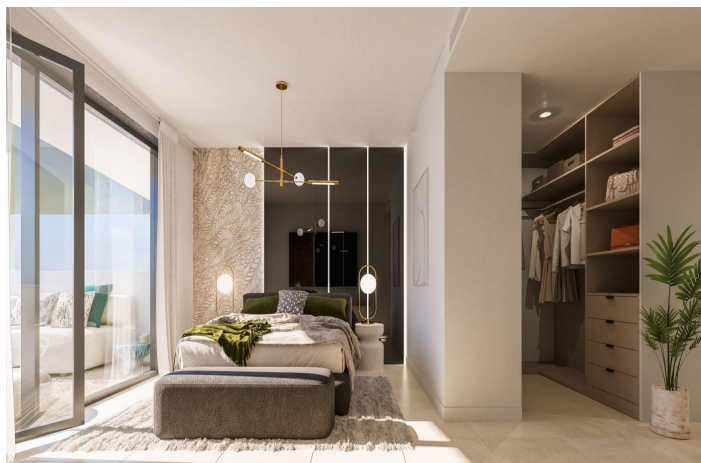




## Penthouse for sale in Manilva, Manilva

522,000 €

Reference: SP0635   Bedrooms: 2   Bathrooms: 2   Build Size: 109m<sup>2</sup>   Terrace: 101m<sup>2</sup>





## Costa del Sol, Manilva

**NEW BUILD RESIDENTIAL COMPLEX IN MANILVA** New build residential complex consist of 100 apartments in a magnificent residential area and in an extraordinary location. 2 and 3 bedrooms apartments are distributed in different blocks resulting in a balanced ensemble. The project combines a modern design architecture wrapped with a perfectly studied landscaping that surrounds the building with its large gardens and common leisure areas that allow the client to enjoy a resort concept. Very spacious apartments, penthouses and ground floors with distributions, qualities and finishes designed so that the property is just what you are looking for. Every apartment has a large terrace, a key part of the entire apartment, a spacious extension with magnificent views. The location and the environment are other great features of this residential complex which has unbeatable views of the Mediterranean Sea. Manilva is a unique town due to its location, culture and gastronomy, a place to enjoy the sun, the sea and a nice and friendly lifestyle. At this residential complex the spacious common areas have been designed to offer a wide range of amenities, services and fun for everyone. A resort in your own home with large gardens with an infinity pool with saline chlorination, solarium, relaxation and yoga area, spa with Turkish bath, jacuzzi and sauna, indoor fitness area, leisure room with coworking, multimedia and games area, surrounded by gardens with landscape treatment... The list of elements of these areas is designed so that you can enjoy this residential area regardless of your preferred lifestyle. The units have been designed with an ideal layout with large spaces and terraces designed to be an extension of the apartment. The orientation of the development and its strategic location allow the views and the sun to be the main features of the terraces. The architectural team has performed a study of the environment and the location, which together with an ideal ratio between built and useful area, make these apartments ideal.



## Features:

### Features

Gym  
Near Schools  
Location: Coastal, Urbanisation  
Near Commercial Center  
Elevator/Lift  
Solarium: Yes  
Number of Parking Spaces: 1  
Terrace: 104 Msq.  
Air Conditioning: Pre-Installed  
Views: Sea  
Double Bedrooms: 2  
Communal Pool  
Gated  
Useable Build Space: 75 Msq.  
Beach: 1000 Meters

### Energy Rating

B

### CO2 Emission Rating

B