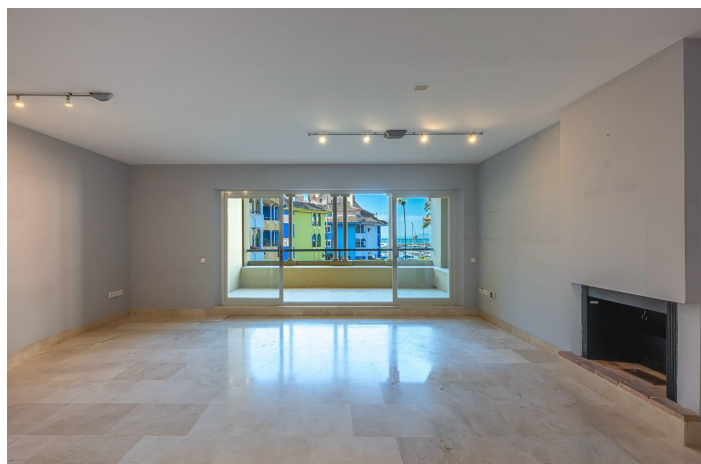




## Middle Floor Apartment for sale in Sotogrande Puerto, Sotogrande

399,000 €

Reference: R4928479    Bedrooms: 2    Bathrooms: 2    Build Size: 136m<sup>2</sup>    Terrace: 40m<sup>2</sup>





---

## Costa de la Luz, Sotogrande Puerto

**\*Charming Marina Apartment with Stunning Sea Views in Sotogrande Port\* Remember : THE PORT IN SOTOGRANDE IS LEASE HOLD** Both large terraces have sea view. One of them has stunning sunrise views. This spacious 2 bedroom, 2 bathroom apartment located in the heart of the prestigious Sotogrande Port, offers an unparalleled beachfront living experience. Boasting breathtaking sea views and direct access to the beach, this property is a unique opportunity for those seeking to create their dream coastal retreat. The apartment features generously sized, light-filled rooms, with large south facing windows that maximize natural light and frame the spectacular surrounding vistas. Its has ample storage, and fitted wardrobes. While the property requires renovation, its excellent layout and potential provide a blank canvas for personalization, allowing you to craft a modern and luxurious seaside haven. With its prime location, the apartment is just steps from the vibrant marina, offering a variety of boutiques, restaurants, and leisure facilities. Whether you're looking for a serene full-time residence or an idyllic holiday home, this property is a rare gem in one of Spain's most sought-after coastal destinations. The property has great rental potential. Please enquire for figures. This property is an ideal investment property which **\*Key Features:\***

- Frontline beach location with uninterrupted sea views
- Large, bright living spaces
- Prime position within Sotogrande Port
- Renovation opportunity with immense potential
- Close to local amenities, dining, and leisure options

We also have 2 well positioned moorings available



## Features:

### Features

Covered Terrace  
Lift  
Private Terrace  
Ensuite Bathroom  
Marble Flooring  
Double Glazing  
Fitted Wardrobes  
WiFi

Fiber Optic

### Views

Sea  
Mountain  
Beach  
Port  
Courtyard

### Orientation

East  
South  
South East  
South West

### Setting

Commercial Area  
Beachside  
Close To Golf  
Close To Port  
Urbanisation  
Close To Sea  
Close To Shops  
Close To Town  
Close To Schools  
Beachfront  
Town  
Port  
Village  
Marina  
Close To Marina  
Front Line Beach Complex

### Kitchen

Fully Fitted  
Partially Fitted

### Climate Control

Air Conditioning  
Pre Installed A/C  
Cold A/C  
Hot A/C  
Fireplace

### Condition

Good  
Renovation Required  
Restoration Required

### Furniture

Not Furnished

### Security

Entry Phone

### Category

Reduced  
Holiday Homes  
Investment  
Bargain  
Beachfront  
Cheap  
Resale