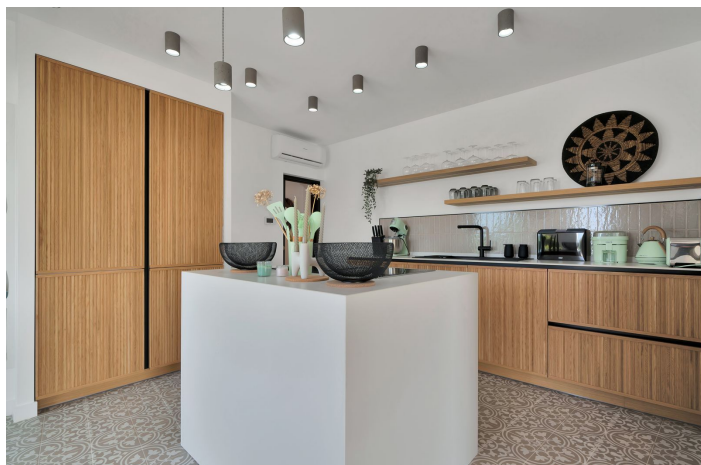




## Detached Villa for sale in Torremuelle, Benalmádena

1,590,000 €

Reference: R4835380    Bedrooms: 5    Bathrooms: 2    Plot Size: 836m<sup>2</sup>    Build Size: 312m<sup>2</sup>





---

## Costa del Sol, Torremuelle

Superb villa of one floor with sea views

Discover this magnificent, fully renovated villa, located in an exclusive community with sports centre (8 padel courts and 2 tennis courts, terrace, cafeteria and massage treatments are available), semi-Olympic swimming pool and green areas. With 312 m<sup>2</sup> of built area and a plot of 836 m<sup>2</sup>, this property offers an exceptional living environment.

The villa has 5 bedrooms, including a master suite with private terrace. Enjoy uninterrupted views of the sea and surrounding vegetation from every room. The fully-equipped kitchen with central island is a real asset for food lovers.

The solid oak flooring adds a touch of elegance to the whole house. What's more, the villa comes fully furnished and decorated, so you can move in straight away with no worries.

Separate from the main house, a staircase gives access to a relaxation area comprising a table with 4 bar stools, a section of wall has been created to accommodate a wine cellar, coffee machine, microwave and various storage units. This room has a separate toilet.

Outside, a welcoming terrace with garden furniture for 6 people awaits you for moments of relaxation with family or friends while contemplating the sea view.

On the street, two closed garages for one car and motorbike have also been renovated and equipped with automatic doors, and in one of them, a lift gives direct access to the main house.

Torremuelle station and the beach are just a few minutes' walk away, as are the bus and taxi ranks. Three restaurants and a mini-market are also available, as is the British College for children aged 2 to 18.

Don't miss this unique opportunity to live in an idyllic setting.

Contact us for more information and to arrange a visit!



## Features:

### Features

Covered Terrace  
Lift  
Near Transport  
Double Glazing  
Fitted Wardrobes  
Sauna  
Wood Flooring  
Jacuzzi  
Fiber Optic

### Views

Sea  
Panoramic  
Garden

### Furniture

Fully Furnished

### Parking

Garage  
Private  
Covered

### Orientation

South

### Setting

Urbanisation  
Close To Sea  
Close To Schools

### Kitchen

Fully Fitted

### Utilities

Electricity  
Drinkable Water

### Climate Control

Air Conditioning

### Pool

Communal  
Private

### Garden

Private  
**Category**  
Resale