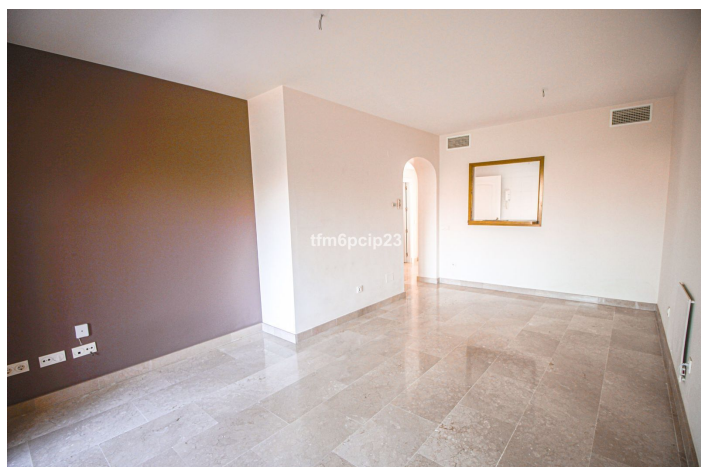




Middle Floor Apartment for sale in La Duquesa, Manilva

240,000 €

Reference: R4965700 Bedrooms: 2 Bathrooms: 2 Build Size: 100m² Terrace: 20m²





Costa del Sol, La Duquesa

Stunning 2-Bedroom Apartment with Panoramic Views in Duquesa Village

Discover this exceptional middle-floor apartment in the sought-after Duquesa Village, offering breathtaking panoramic views of the sea, countryside, and pool. Enjoy beautiful sunrises from the spacious 20m² private terrace, perfect for relaxing or entertaining.

This 100m² apartment features 2 bedrooms and 2 bathrooms, a bright and airy living space, and a fully fitted kitchen. The property is in excellent condition, with marble flooring, double glazing, and fitted wardrobes for added comfort. Climate control is ensured with air conditioning (hot & cold) and pre-installed A/C.

Set within a secure, gated complex with 24-hour security, residents can take advantage of four communal swimming pools, beautifully landscaped gardens, and on-site amenities such as paddle tennis courts and a storage room. The apartment is conveniently located close to golf courses, the marina, the beach, and local shops.

Additional features include:

Underground parking

Lift access & accessibility for reduced mobility

Fibre optic internet

Electric blinds & entry phone system

This resale property is perfect for those seeking a serene coastal lifestyle with easy access to everything La Duquesa and the Costa del Sol have to offer.

Contact us today to arrange a viewing!

Middle Floor Apartment, La Duquesa, Costa del Sol.

2 Bedrooms, 2 Bathrooms, Built 100 m², Terrace 20 m².

Setting : Close To Golf, Close To Port, Close To Sea, Close To Town, Close To Marina, Urbanisation.

Orientation : East.

Condition : Excellent.

Pool : Communal.

Climate Control : Air Conditioning, Pre Installed A/C, Hot A/C, Cold A/C.

Views : Sea, Country, Panoramic, Pool.

Features : Covered Terrace, Lift, Fitted Wardrobes, Private Terrace, Paddle Tennis, Storage Room, Utility Room, Access for people with reduced mobility, Marble Flooring, Double Glazing, Fiber Optic.

Furniture : Not Furnished.

Kitchen : Fully Fitted.

Garden : Communal, Landscaped.

Security : Gated Complex, Electric Blinds, Entry Phone, 24 Hour Security.

Parking : Underground.

Utilities : Electricity, Drinkable Water.

Category : Resale.



Features:

Features

Covered Terrace
Lift
Private Terrace
Storage Room
Marble Flooring
Double Glazing
Fitted Wardrobes
Paddle Tennis
Utility Room
Fiber Optic
Access for people with reduced mobility

Views

Sea
Panoramic
Country
Pool

Pool

Communal

Garden

Communal
Landscaped

Utilities

Electricity
Drinkable Water
CO2 Emission Rating
E

Orientation

East

Setting

Close To Golf
Close To Port
Urbanisation
Close To Sea
Close To Town
Close To Marina

Furniture

Not Furnished

Security

Gated Complex
24 Hour Security
Electric Blinds
Entry Phone

Category

Resale

Climate Control

Air Conditioning
Pre Installed A/C
Cold A/C
Hot A/C

Condition

Excellent

Kitchen

Fully Fitted

Parking

Underground

Energy Rating

D