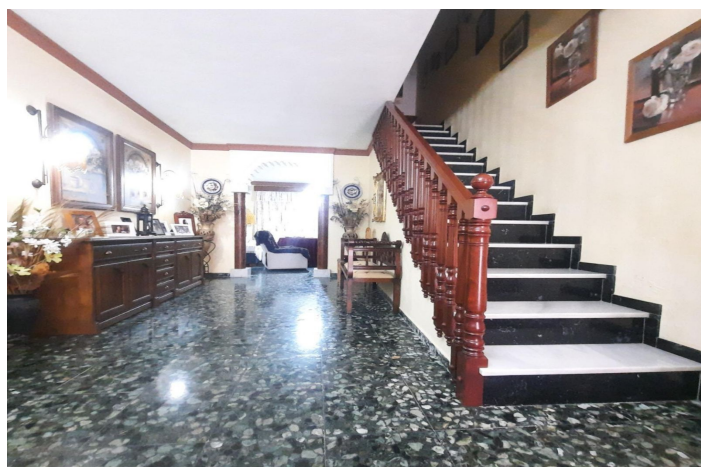




Semi-Detached House for sale in Monda, Monda

250,000 €

Reference: R4992580 Bedrooms: 4 Bathrooms: 2 Build Size: 300m²





Sierra de las Nieves, Monda

Semi-Detached Chalet for Sale in Monda

Centrally located town house, just 15 minutes from Marbella, in perfect move-in condition.

Located in the charming village of Monda, this property offers the perfect blend of rural tranquility and proximity to Marbella. Monda is known for its traditional Andalusian atmosphere and its closeness to nature, while being just 15 minutes from Marbella. This semi-detached chalet, built in 1990, is in perfect condition and ready to move in, with a total built area of 300 m² and 280 m² usable, spread across 3 floors.

Key Features:

Property Type: Semi-detached chalet

Built Area: 300 m²

Usable Area: 280 m²

Layout: 3 floors

Bedrooms: 4

Bathrooms: 2

Terrace and balcony

Condition: Second-hand, in good condition

Fitted wardrobes

Storage room

Orientation: South

Year of Construction: 1990

Location:

Located in the center of Monda, this town house is just 15 minutes from Marbella, offering an excellent combination of tranquility and proximity to the Costa del Sol. Perfect for those looking to live near the city but in a more relaxed environment.



Features:

Features

Near Transport
Private Terrace
Fitted Wardrobes

Orientation

South

Views

Mountain
Panoramic
Country
Forest
Furniture
Part Furnished

Setting

Urbanisation
Close To Shops
Close To Town
Close To Schools
Town
Mountain Pueblo
Close To Forest

Condition

Good

Kitchen

Fully Fitted

Security

Safe

Utilities

Electricity