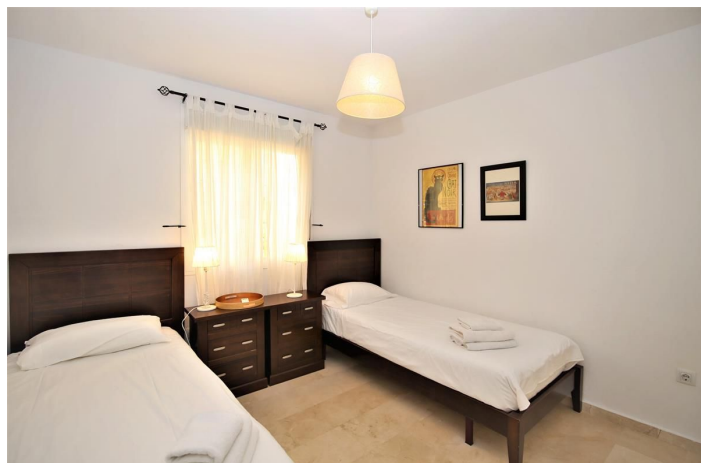




Middle Floor Apartment for rent in Estepona, Estepona

645 - 1,145 €

Reference: R4958941 Bedrooms: 2 Bathrooms: 2 Plot Size: 105m² Build Size: 105m² Terrace: 25m²





Costa del Sol, Estepona

An ideal apartment, perfect for small families or couples wanting to stay right next to the beach, close to Estepona port and town centre. It has two bedrooms, two bathrooms, a living room, a fully fitted kitchen and an east facing balcony. This property provides a high speed fiber optic Wifi connection and independent air-con units in all bedrooms and living room. The master bedroom has a king size bed with an en-suite bathroom and the second bedroom has two single beds. The en-suite bathroom with bathtub and over-head shower and the second bathroom has a walk-in shower cubicle. The balcony area has a dining table for four guests ready to enjoy the morning sun. The living area has a dining table and seating also for four guests plus an international TV streaming package including Sky for the "flat screen is also available. A fully fitted kitchen along with a washing machine ready for your use. The urbanisation provides two swimming pools and several community garden areas around it. A private parking space is also available in the underground garage.

This property is located in Puerto Alto, a well known urbanisation in a large and pleasant residential area close to Estepona port. It is only a 10 minute walk from the beach next to Estepona marina and only 15 minutes from town centre where you can find local commercial areas and spanish style tapas bars and restaurants. There are several supermarkets around the complex such as SuperCor and Carrefour Express, all within walking distance from the property. Estepona marina has a variety of restaurants and bars available and a beautiful promenade by the beach where you can take long walks, rollerblade or hire bicycles for the family. It is a 25 minute drive from opulent Marbella and Puerto Banús, where you can find more sophisticated restaurants, high end shops and an extravagant night life.



Features:

Features

Lift
Near Transport

Views

Sea
Garden

Pool

Port

Garden

Communal

Orientation

East

Setting

Close To Port
Close To Sea
Close To Shops
Close To Town

Parking

Garage
Private

Climate Control

Air Conditioning

Pool

Communal

Category

Golf