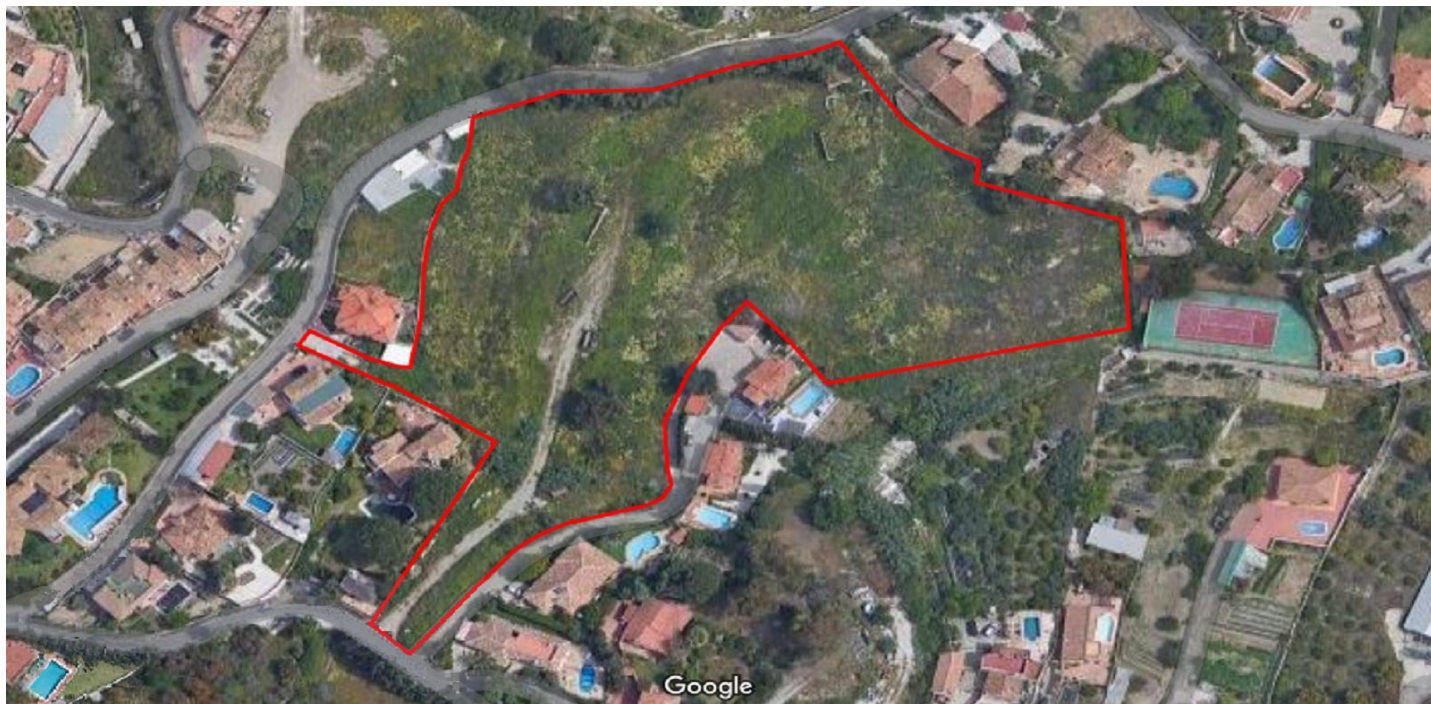




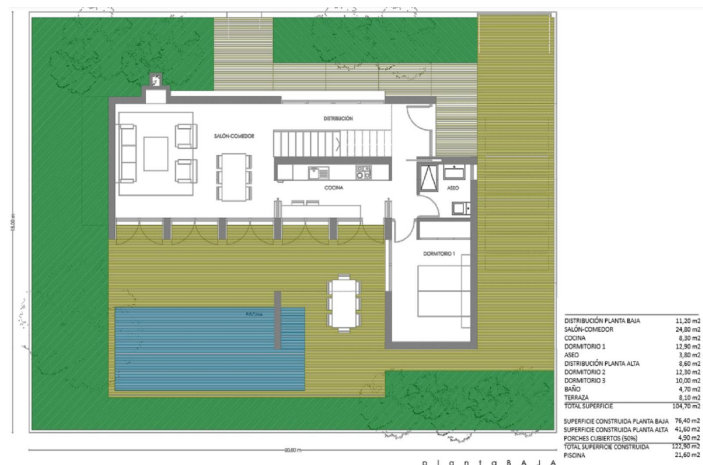
Residential Plot for sale in Benalmádena, Benalmádena

3,500,000 €

Reference: R5005372 Plot Size: 15,668m²



planta ALTA



planta BAJA

DISTRIBUCIÓN PLANTA BAJA	11,20 m ²
SALÓN-COMEDOR	24,50 m ²
COCINA	6,50 m ²
DORMITORIO 1	11,50 m ²
ASEO	5,50 m ²
DISTRIBUCIÓN PLANTA ALTA	6,80 m ²
DORMITORIO 2	11,20 m ²
DORMITORIO 3	10,00 m ²
ASEO	4,90 m ²
TERRAZA	11,00 m ²
TOTAL SUPERFICIE	104,70 m ²
SUPERFICIE CONSTRUIDA PLANTA BAJA	78,40 m ²
SUPERFICIE CONSTRUIDA PLANTA ALTA	4,60 m ²
PORCHES CUBIERTOS (SON)	4,50 m ²
TOTAL SUPERFICIE CONSTRUIDA	127,50 m ²
PISCINA	21,60 m ²



Costa del Sol, Benalmádena

Incredible plot for sale for single-family use, such as semi-detached or independent chalets, each property with the possibility of having a private pool and garage, at the same time the urbanization can have a community pool, two tennis courts and playgrounds for children.

All the houses would obtain a panoramic view of the Mediterranean. In turn, the land has a privileged location, being only 10 minutes walking to the center of Benalmádena town or 3 minutes by car, the nearest beach is only 5 minutes by car and in less than 20 minutes you reach to Malaga airport, it is also an area highly demanded by foreigners.

The features are as follows:

ID:

- Total area: 15,667.96 m²
- Building space: 3,290, 31 m²
- Number of houses: 20
- Average buildability: 0.21 m²/m²s

Delivery area:

- Characteristic use: Single-family
- Typical use: 0.286 m²/m²

Weighting coefficients:

- Usage: Coefficient
- Single family: 1.00
- Town: 0.71

CONDITIONS OF USE:

- Actuation system: Compensation
- Detailed study: Compulsory
- Urbanization project: Compulsory

Transfers:

- Infrastructures: 0.00 m²
- Free spaces G: 0.00 m²
- Free spaces L: 190.70 m²
- Various: 3,322, 94 m²
- Total assignments: 3,513, 64 m² / 22.46%



Features:

Features

Covered Terrace
Lift
Private Terrace
Satellite TV
Storage Room
Ensuite Bathroom
Marble Flooring
Double Glazing
Fitted Wardrobes
Solarium
Gym
Sauna
Games Room
Tennis Court
Utility Room
Wood Flooring
Jacuzzi
Bar
Access for people with reduced mobility

Setting

Close To Golf
Urbanisation
Close To Sea
Close To Shops
Close To Schools
Close To Forest

Furniture

Optional

Parking

Underground
Garage
Private
Covered

Orientation

North
East
South
West

Condition

New Construction

Garden

Communal
Private
Landscaped
Easy Maintenance

Utilities

Electricity
Drinkable Water
Telephone
Gas
Photovoltaic solar panels
Solar water heating

Views

Sea
Mountain
Panoramic
Country
Garden
Pool
Urban
Street

Pool

Communal
Room for Pool
Private
Children`s Pool

Security

Gated Complex

Category

Investment
Off Plan
With Planning Permission