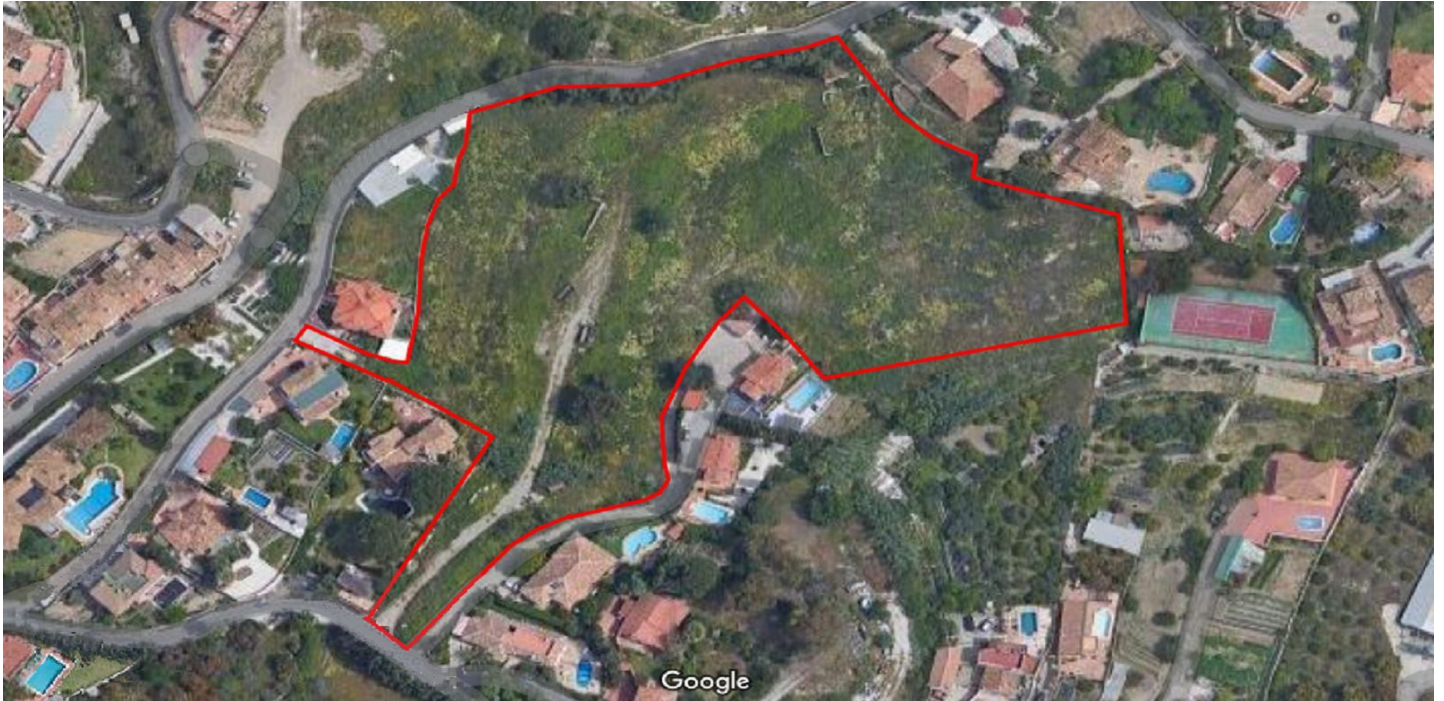




Residentiele Percelen te koop in Benalmádena, Benalmádena

3.500.000 €

Referentie: R5005372 Plotgrootte: 15.668m²



planta ALTA



DISTRIBUCIÓN PLANTA BAJA	11,20 m ²
SALÓN-COMEDOR	24,80 m ²
COCHINA	8,20 m ²
DORMITORIO 1	11,90 m ²
ASEO	1,90 m ²
DISTRIBUCIÓN PLANTA ALTA	8,80 m ²
DORMITORIO 2	11,20 m ²
DORMITORIO 3	10,00 m ²
ASEO	6,20 m ²
TERRAZA	8,10 m ²
POZILLO/ESPESOR	198,30 m ²
SUPERFICIE CONSTRUIDA PLANTA BAJA	76,40 m ²
SUPERFICIE CONSTRUIDA PLANTA ALTA	40,60 m ²
POZILLO/ESPESOR (TOTAL)	400 m ²
TOTAL SUPERFICIE CONSTRUIDA	117,00 m ²
PISTONA	21,60 m ²

planta BAJA



Costa del Sol, Benalmádena

Incredible plot for sale for single-family use, such as semi-detached or independent chalets, each property with the possibility of having a private pool and garage, at the same time the urbanization can have a community pool, two tennis courts and playgrounds for children.

All the houses would obtain a panoramic view of the Mediterranean. In turn, the land has a privileged location, being only 10 minutes walking to the center of Benalmádena town or 3 minutes by car, the nearest beach is only 5 minutes by car and in less than 20 minutes you reach to Malaga airport, it is also an area highly demanded by foreigners.

The features are as follows:

ID:

- Total area: 15,667.96 m²
- Building space: 3,290, 31 m²
- Number of houses: 20
- Average buildability: 0.21 m²/m²s

Delivery area:

- Characteristic use: Single-family
- Typical use: 0.286 m²/m²

Weighting coefficients:

- Usage: Coefficient
- Single family: 1.00
- Town: 0.71

CONDITIONS OF USE:

- Actuation system: Compensation
- Detailed study: Compulsory
- Urbanization project: Compulsory

Transfers:

- Infrastructures: 0.00 m²
- Free spaces G: 0.00 m²
- Free spaces L: 190.70 m²
- Various: 3,322, 94 m²
- Total assignments: 3,513, 64 m² / 22.46%



Kenmerken:

Extra's

Overdekt terras
Tillen
Privé Terras
Satelliet TV
Berging
Ensuite badkamer
Marmeren vloeren
Dubbele beglazing
Inbouwkasten
Zonbank
Sportschool
Sauna
Speelzaal
Tennisbaan
Bijkeuken
Houten vloeren
Jacuzzi
Bar
Access for people with reduced mobility

Ligging

Dichtbij golfbaan
Urbanisatie
Dichtbij zee
Dicht bij winkels
Dichtbij scholen
Dichtbij bos

Meubilering

optioneel Furniture

Parkeergelegenheid

ondergrondse parkeergarage
garage
private Parking
overdekte parkeerplaats

Zonorientatie

noorden
Oosten
zuiden
West

Huidige Staat

Nieuwbouw

Tuin

gemeenschappelijke tuin
private Garden
aangelegde tuin
Makkelijk te onderhouden tuin

Voorzieningen

Elektriciteit
Drinkwater
Telefoon
Gas
Fotovoltaïsche zonnepanelen
Zonne-energie water verwarming

Uitzicht

Zeezicht
Mountain Bekeken
Weids
Country Bekeken
Garden Views
Pool Bekeken
Urban Bekeken
street Views

Zwembad

Gemeenschappelijk zwembad
Kamer voor zwembad
private Pool
Children`s Pool

Beveiliging

Omheind complex

Categorie

Investering
Off Plan
Met Bouwvergunning