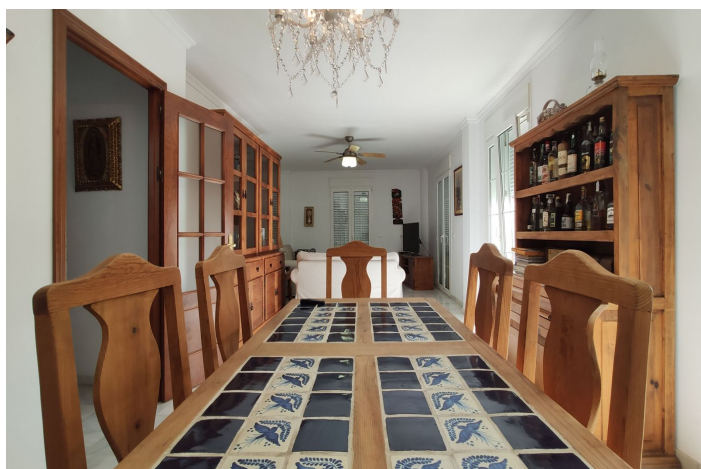




## Townhouse for sale in Pizarra, Pizarra

279,000 €

Reference: R5021743 Bedrooms: 4 Bathrooms: 3 Plot Size: 117m<sup>2</sup> Build Size: 285m<sup>2</sup>





## Valle del Guadalhorce, Pizarra

A three-story house for sale in the heart of Pizarra, filled with natural light throughout and offering endless possibilities. On the ground floor, there is a spacious 95 m<sup>2</sup> commercial space currently set up as a medical clinic, with anti-vandal glass, a restroom, and an interior patio—ready for immediate professional use. The first floor houses a 180 m<sup>2</sup> duplex. The lower level features a large living-dining room, a fully equipped kitchen with high-end appliances, a master bedroom, and a full bathroom. The upper floor is an open-plan attic with two additional bedrooms and a spacious second bathroom. The top floor boasts a rooftop terrace and solarium with 360° panoramic views over the town and the surrounding countryside—perfect for relaxing outdoors and enjoying the sunset. The property offers top-quality finishes: white Macael marble flooring, porcelain tiling in the kitchen and bathrooms, built-in wardrobes, tilt-and-turn Kommerling PVC windows with Climalit double glazing, and motorized blinds. All rooms are fitted with low-consumption air conditioning, and hot water is supplied via solar energy (300 L tank), supported by an additional 1,500 L water tank. This is an exceptional investment opportunity: the commercial space could be used as a dental or veterinary clinic, a physiotherapy center, an academy, or a beauty studio. It could also be converted into a residence or multiple rental rooms. The duplex, with separate access to each floor, allows for the creation of two independent dwellings, maximizing profitability. Located in the Guadalhorce Valley (Málaga), Pizarra enjoys excellent transport links: the RENFE C-2 commuter train line and the A-357 highway both connect to Málaga city and the airport in under 30 minutes. The town offers all essential services: health center, pharmacies, supermarkets, schools, shops, and Andalusian restaurants. Its natural surroundings are ideal for hiking and exploring historical landmarks such as the Church of San Pedro and the Hermitage of La Fuensanta. With its proximity to Málaga and complete infrastructure, Pizarra is an ideal place to live or invest. Don't miss this unique opportunity—contact us today for more information or to arrange a visit.



## Features:

### Features

Near Transport  
Ensuite Bathroom  
Marble Flooring  
Double Glazing  
Fitted Wardrobes  
Solarium  
Near Church  
Fiber Optic

### Views

Mountain  
Panoramic  
Country  
Urban

### Kitchen

Fully Fitted

### CO2 Emission Rating

D

### Orientation

South West

### Setting

Close To Shops  
Close To Town  
Close To Schools

### Security

Electric Blinds  
Entry Phone

### Climate Control

Air Conditioning

### Condition

Good

### Energy Rating

E