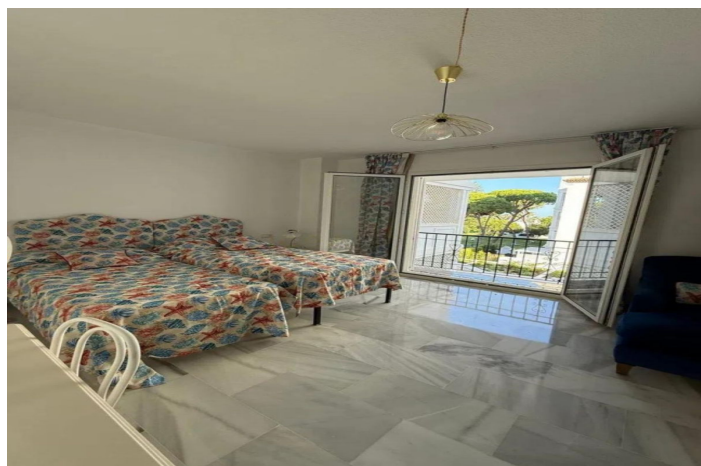
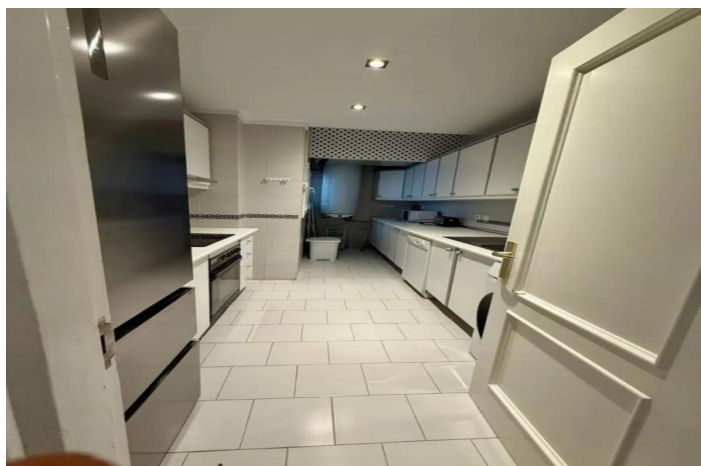
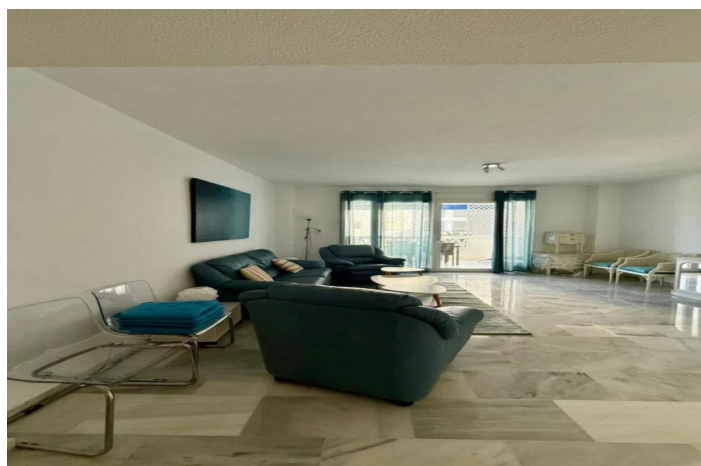
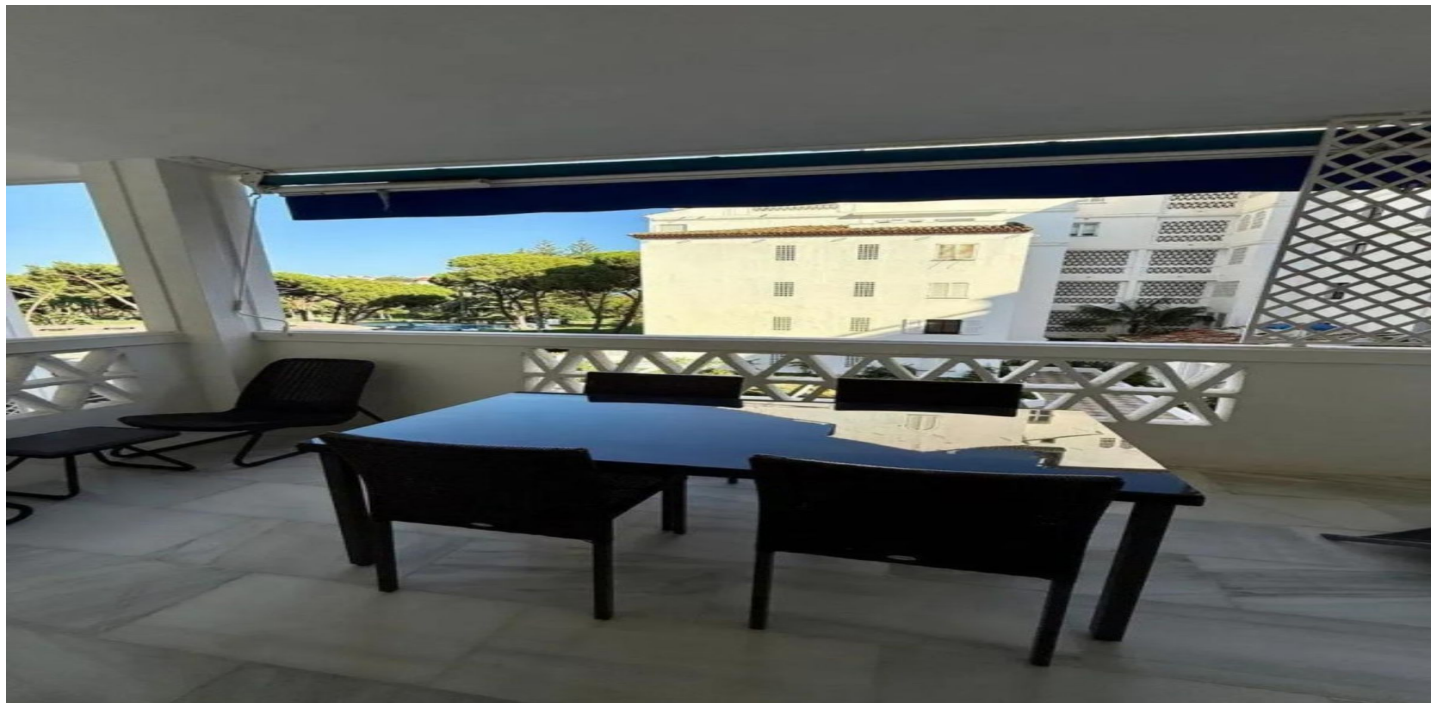




## Middle Floor Apartment for sale in Puerto Banús, Marbella

1,380,000 €

Reference: R5110237   Bedrooms: 3   Bathrooms: 3   Build Size: 220m<sup>2</sup>   Terrace: 12m<sup>2</sup>





## Costa del Sol, Puerto Banús

this is an exceptional property for those who wish to enjoy a stay in a privileged location in the center of Puerto Banús, a step away from the Marina, exclusive shops and the best restaurants. The property is located on the 2nd floor and from its terrace offers wonderful views of the urbanization's garden with the sea in the background. The house consists of 3 bedrooms. The main one is excellent, very spacious and with an en-suite bathroom and balcony. The other two bedrooms are equally spacious and bright, and one of them also has an en-suite bathroom. The living-dining room is exceptional, comfortable, cozy and very bright, from which you can access a large terrace with views of the garden and the sea. The kitchen is independent, with an elegant and at the same time very functional style and has a window overlooking the interior patio. The property is located in one of the most exclusive urbanizations in Marbella, with a spectacular garden, 3 swimming pools, 2 restaurants, concierge in the portal and 24-hour private security. The parking space, with 24-hour security, is located in the same building, with direct access from the property via the elevator."

Middle Floor Apartment, Puerto Banús, Costa del Sol. 3 Bedrooms, 3 Bathrooms, Built 220 m<sup>2</sup>, Terrace 12 m<sup>2</sup>. Setting : Commercial Area, Beachside, Port, Close To Port, Close To Shops, Close To Sea, Close To Schools, Marina, Close To Marina, Urbanisation. Orientation : East, South East. Condition : Good. Pool : Communal, Children`s Pool. Climate Control : Air Conditioning, Hot A/C, Cold A/C. Views : Sea, Garden. Features : Covered Terrace, Lift, Fitted Wardrobes, Near Transport, Private Terrace, WiFi, Utility Room, Ensuite Bathroom, Access for people with reduced mobility, Double Glazing, 24 Hour Reception, Courtesy Bus, Near Church, Fiber Optic. Furniture : Part Furnished. Kitchen : Fully Fitted. Garden : Communal. Security : Gated Complex, 24 Hour Security. Parking : Underground, Garage, Covered, Private. Category : Beachfront, Resale.



## Features:

### Features

Covered Terrace  
Lift  
Near Transport  
Private Terrace  
Ensuite Bathroom  
Double Glazing  
24 Hour Reception  
Fitted Wardrobes  
WiFi  
Utility Room  
Courtesy Bus  
Near Church  
Fiber Optic  
Access for people with reduced mobility

### Views

Sea  
Garden

### Orientation

East  
South East

### Climate Control

Air Conditioning  
Cold A/C  
Hot A/C

### Setting

Commercial Area  
Beachside  
Close To Port  
Urbanisation  
Close To Sea  
Close To Shops  
Close To Schools  
Port  
Marina  
Close To Marina

### Condition

Good

### Pool

Communal  
Children`s Pool

### Garden

Communal

### Furniture

Part Furnished

### Kitchen

Fully Fitted

### Security

Gated Complex  
24 Hour Security

### Parking

Underground  
Garage  
Private  
Covered

### Category

Beachfront  
Resale