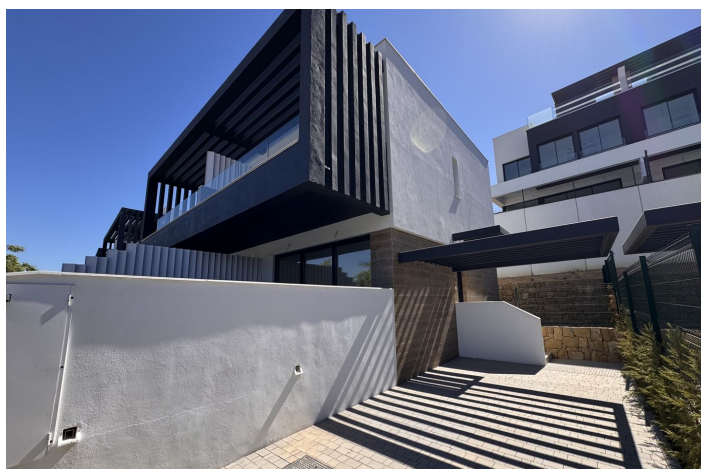




Semi-Detached House for rent in Atalaya, Estepona

5,000 - 5,000 €

Reference: R5152657 Bedrooms: 3 Bathrooms: 3 Plot Size: 208m² Build Size: 123m² Terrace: 112m²





Costa del Sol, Atalaya

Semi-Detached House, Atalaya, Costa del Sol. 3 Bedrooms, 3 Bathrooms, Built 0 m². Setting : Frontline Golf, Town, Village, Close To Golf, Close To Shops, Close To Sea, Close To Town, Close To Schools, Close To Forest, Urbanisation. Orientation : West. Condition : Excellent, New Construction. Pool : Communal. Climate Control : Air Conditioning, Hot A/C, Cold A/C, Central Heating. Views : Mountain, Country, Courtyard, Forest. Features : Covered Terrace, Fitted Wardrobes, Near Transport, Private Terrace, Double Glazing, Fiber Optic. Furniture : Optional. Kitchen : Fully Fitted. Garden : Private. Security : Electric Blinds, Entry Phone, Alarm System. Parking : Garage, Private. Utilities : Electricity, Drinkable Water. Category : Luxury.



Features:

Features

Covered Terrace
Near Transport
Private Terrace
Double Glazing
Fitted Wardrobes
Fiber Optic

Views

Mountain
Country
Courtyard
Forest

Pool

Communal

Garden

Private

Utilities

Electricity
Drinkable Water

Orientation

West

Setting

Close To Golf
Urbanisation
Close To Sea
Close To Shops
Close To Town
Close To Schools
Frontline Golf
Town
Village
Close To Forest

Furniture

Optional

Security

Alarm System
Electric Blinds
Entry Phone

Category

Luxury

Climate Control

Air Conditioning
Cold A/C
Hot A/C
Central Heating

Condition

Excellent
New Construction

Kitchen

Fully Fitted

Parking

Garage
Private