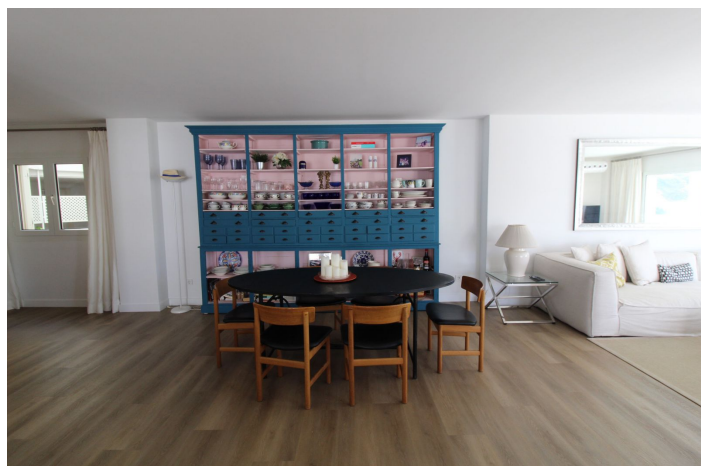




Middle Floor Apartment for sale in Puerto Banús, Marbella

1,480,000 €

Reference: R4868281 Bedrooms: 2 Bathrooms: 2 Build Size: 180m²





Costa del Sol, Puerto Banús

Amazing apartment ready to move in, with a lot of light all day as it makes corner to the south west; it is located in Puerto Banus in the Prestigious Urbanisation Playas del Duque, with direct access to the beach and the promenade; it has huge tropical gardens of 3 hectares with ponds as well as several salt water pools for children and adults.

In the spectacular gardens there are two private restaurants for the owners of the Urbanisation.

It consists of 2 bedrooms and 2 bathrooms and a studio; and it can easily be converted into three bedrooms as it is all very spacious. From the living room you access 2 large terraces both overlooking the sea and the communal garden.

Another room has a large covered and closed terrace that can be used as an office or playground for children. It consists of a large open plan kitchen with spectacular and integrated islet in the living room.

It is ideal to live all year and also supposes a fantastic investment if you want to get good profitability in rents;

The urbanization of Lujo is closed and has 24h security. includes a parking space. This is one of the most spectacular homes for sale in Playas del Duque, since it is located in the Central and South Building with regard to the gardens.

Puerto Banus is located a walk from this wonderful house: Playa, Corte Ingles, Supermarkets etc... do not miss this opportunity and call us.



Features:

Features

Covered Terrace
Lift
Near Transport
Ensuite Bathroom
Double Glazing
Fitted Wardrobes

Views

Sea
Panoramic
Garden
Pool

Pool

Communal

Garden

Communal

Category

Beachfront
Luxury

Orientation

South West

Setting

Beachside
Urbanisation
Close To Shops
Close To Town
Close To Schools
Beachfront
Front Line Beach Complex

Furniture

Not Furnished
Optional

Security

Gated Complex
24 Hour Security
Entry Phone

Energy Rating

E

Climate Control

Air Conditioning
Cold A/C
Hot A/C

Condition

Excellent
Recently Renovated

Kitchen

Partially Fitted

Parking

Private

CO2 Emission Rating

E