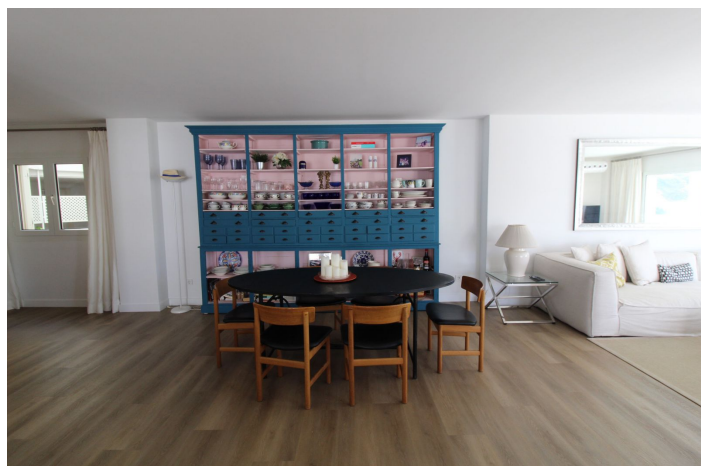




Tussenverdieping Appartement te koop in Puerto Banús, Marbella

1.480.000 €

Referentie: R4868281 Slaapkamers: 2 Badkamers: 2 Perceelgrootte: 180m²





Costa del Sol, Puerto Banús

Amazing apartment ready to move in, with a lot of light all day as it makes corner to the south west; it is located in Puerto Banus in the Prestigious Urbanisation Playas del Duque, with direct access to the beach and the promenade; it has huge tropical gardens of 3 hectares with ponds as well as several salt water pools for children and adults.

In the spectacular gardens there are two private restaurants for the owners of the Urbanisation.

It consists of 2 bedrooms and 2 bathrooms and a studio; and it can easily be converted into three bedrooms as it is all very spacious. From the living room you access 2 large terraces both overlooking the sea and the communal garden.

Another room has a large covered and closed terrace that can be used as an office or playground for children. It consists of a large open plan kitchen with spectacular and integrated islet in the living room.

It is ideal to live all year and also supposes a fantastic investment if you want to get good profitability in rents;

The urbanization of Lujo is closed and has 24h security. includes a parking space. This is one of the most spectacular homes for sale in Playas del Duque, since it is located in the Central and South Building with regard to the gardens.

Puerto Banus is located a walk from this wonderful house: Playa, Corte Ingles, Supermarkets etc... do not miss this opportunity and call us.



Kenmerken:

Extra's

Overdekt terras
Tillen
Nabij vervoer
Ensuite badkamer
Dubbele beglazing
Inbouwkasten

Uitzicht

Zeezicht
Weids
Garden Views
Pool Bekeken

Zwembad

Gemeenschappelijk zwembad

Tuin

gemeenschappelijke tuin

Categorie

Aan zee
Luxe

Zonorientatie

South West Orientation

Ligging

Dicht bij strand
Urbanisatie
Dicht bij winkels
Dichtbij stad
Dichtbij scholen
Eerstelijns strand
Eerste lijn strandontwikkeling

Meubilering

Ongemeubileerd
optioneel Furniture

Beveiliging

Omheind complex
24 -uurs beveiliging
Deurbel met intercom

Energiebeoordeling

E

Klimaatbeheersing

Airconditioning
Koude A/C
Warme A/C

Huidige Staat

Uitstekende conditie
Onlangs gerenoveerd

Keuken

Gedeeltelijk ingerichte keuken

Parkeergelegenheid

private Parking

CO2 Emission Rating

E