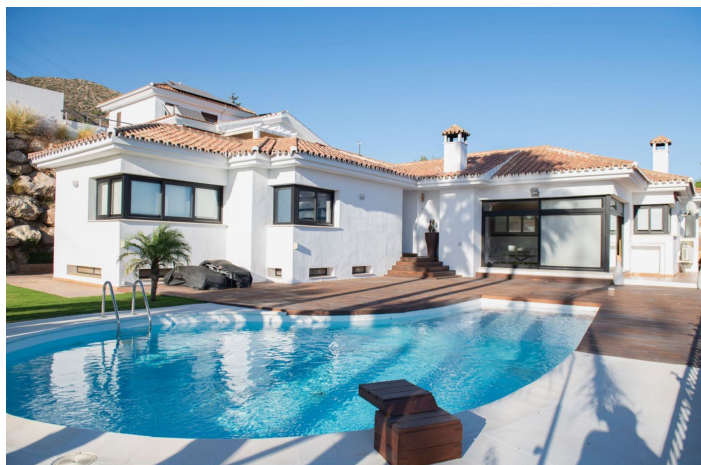




## Detached Villa for sale in Benalmádena, Benalmádena

1,840,000 €

Reference: R5160391 Bedrooms: 4 Bathrooms: 4 Plot Size: 847m<sup>2</sup> Build Size: 294m<sup>2</sup>





## Costa del Sol, Benalmádena

Discover this spectacular Villa with SEA views and unique design in one of the most exclusive areas of the Costa del Sol, Higuera, Benalmádena! Ideal property for families looking for space, comfort, sustainability, in a quiet and safe area within reach of all services, close to the beach and with quick connection to the motorway. Only 15 minutes drive to Malaga airport, 25 minutes to Malaga, 26 minutes to Marbella. It has an area of 847m<sup>2</sup> plot and multiple spaces of enjoyment, 294 m built, with a modern design and high quality materials. Located in a quiet environment, with sea views, south facing. This distribution of the villa is following : - on a main floor there is a large living room with a fire place, kitchen with high-end appliances, 3 bedrooms and 2 bathrooms and storage and utility room - downstairs in a basement there is another large living room with a gym, 1 bedroom and bathroom + storage room. There is also a pre-installation for an extra kitchen if needed. Outside, private swimming pool with spectacular views of the bay of Fuengirola, large terrace with garden usable all year round, chill-out area, barbecue area, equipped with outdoor toilet. Outdoor garage has a capacity for three vehicles. As for equipment, it has air conditioning in every room and pre - installation for solar panels. An aerothermal system is used in order to lower to costs of the energy. There is a large water tank in order to collect water.



## Features:

### Features

Near Transport  
Private Terrace  
Satellite TV  
Storage Room  
Ensuite Bathroom  
Fitted Wardrobes  
WiFi  
Games Room  
Guest Apartment  
Staff Accommodation  
Basement

### Views

Sea  
Mountain  
Garden  
Pool  
Urban

### Pool

Private

### Security

Gated Complex  
24 Hour Security  
Electric Blinds

### Category

Luxury  
Resale

### Orientation

South  
South West

### Setting

Close To Golf  
Urbanisation  
Close To Sea  
Close To Shops  
Close To Town  
Close To Schools  
Close To Forest  
Close To Marina

### Furniture

Fully Furnished

### Parking

Garage  
Private

### Climate Control

Air Conditioning  
Cold A/C  
Hot A/C  
Fireplace

### Condition

Excellent

### Kitchen

Fully Fitted

### Utilities

Electricity  
Drinkable Water