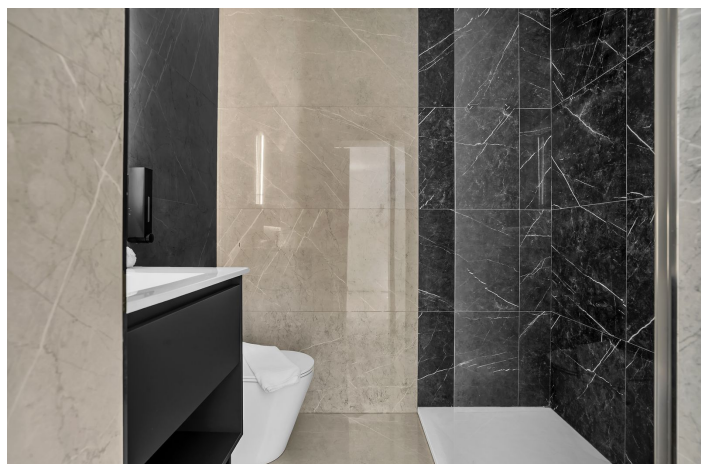
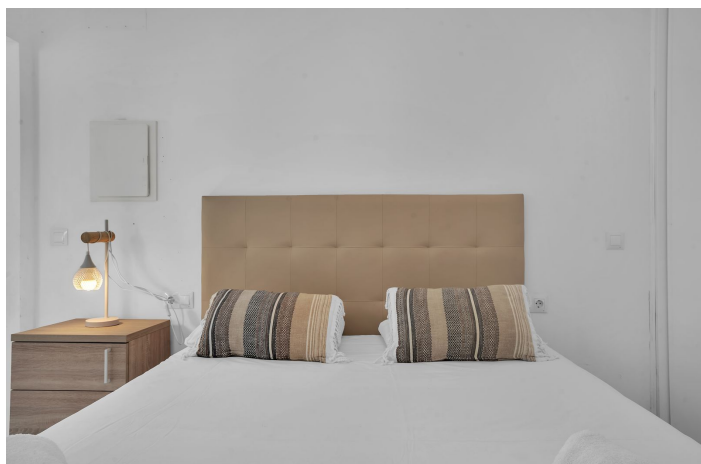
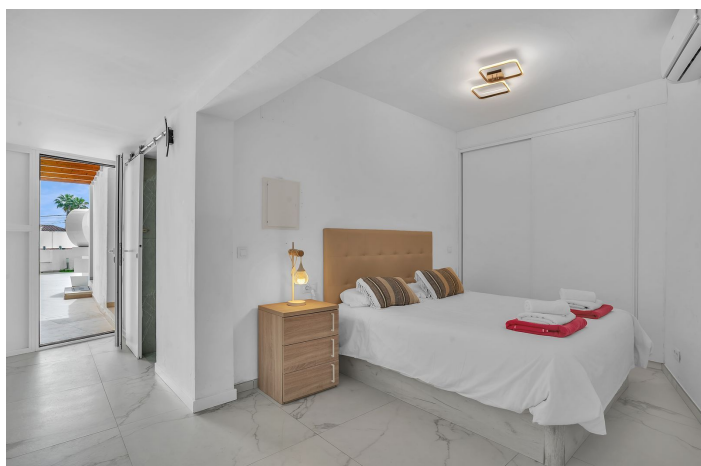




Semi-Detached House for rent in Nueva Andalucía, Marbella

4,304 - 8,220 €

Reference: R5162425 Bedrooms: 6 Bathrooms: 7 Build Size: 260m² Terrace: 40m²





Costa del Sol, Nueva Andalucía

This exquisite 6-bedroom villa, located just a short distance from Puerto Banús, offers breathtaking views of the surrounding mountains and provides a refined setting for up to 12 guests. With 260 m² of luxurious living space, the villa presents an ideal retreat for those seeking both comfort and style. The beautifully maintained garden offers a generous outdoor space complete with a private swimming pool. This peaceful area is ideal for relaxing under the sun, enjoying the mountain views, or dining outdoors in a serene setting. A built-in BBQ enhances the experience, making it a perfect spot for al fresco meals and leisurely gatherings with family or friends. The villa has been thoughtfully designed with modern conveniences in mind, ensuring a seamless stay. Inside, you will find a fully equipped kitchen, complete with a ceramic hob, refrigerator, microwave, oven, freezer, and dishwasher, along with an array of kitchen utensils to cater to all your culinary needs. For added comfort, the villa is equipped with central heating and air conditioning throughout, alongside essential amenities such as a washing machine, dryer, iron, hairdryer, and high-speed Wi-Fi. One of the bedrooms is cleverly arranged as a guesthouse-style suite, accessed through a separate door adjacent to the main entrance. This provides additional privacy and flexibility for guests. The villa is enclosed by a secure main gate, ensuring privacy and peace of mind throughout your stay. With its combination of elegance and stunning surroundings - this villa provides a truly exceptional setting for an unforgettable stay in Marbella.



Features:

Features

Covered Terrace
Near Transport
Satellite TV
Marble Flooring
Fitted Wardrobes
WiFi

Setting

Close To Golf
Close To Sea
Close To Town

Furniture

Fully Furnished

Parking

Street

Orientation

South West

Condition

Excellent

Kitchen

Fully Fitted

Views

Mountain
Urban
Street

Pool

Private

Garden

Communal