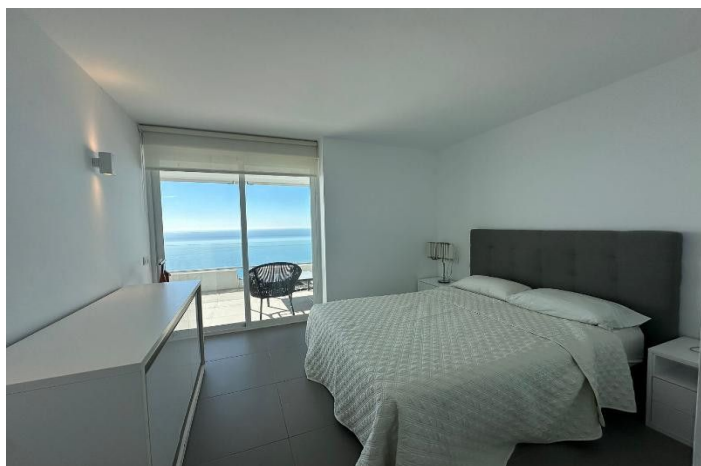
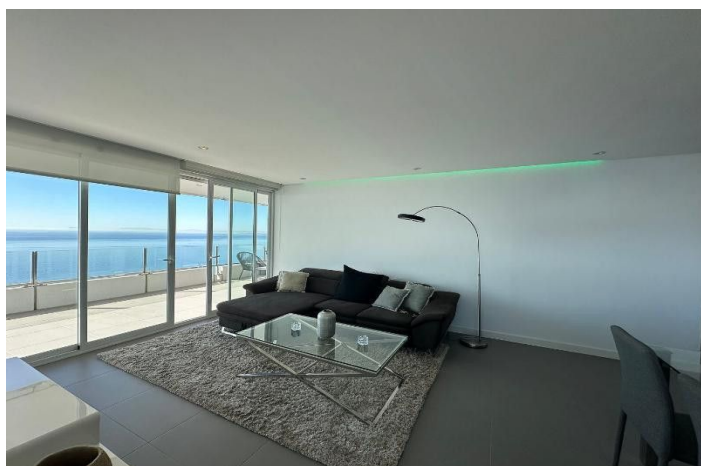




Tussenverdieping Appartement te huur in Río Real, Marbella

3.000 - 3.000 €

Referentie: R5215765 Slaapkamers: 1 Badkamers: 2 Perceelgrootte: 117m²





Costa del Sol, Río Real

This bright apartment offers a unique life experience, combining modern comfort with a privileged environment. From the first moment, it stands out for its breathtaking panoramic views covering the sea, the mountain and the city, creating an atmosphere of serenity and exclusivity. The property allows animals, making it an ideal choice for those looking to share their home with their pets on the Costa del Sol. The apartment has a large bedroom and two bathrooms, distributed in 117m2 built that make the most of natural light and space. The house is presented in excellent condition, fully furnished and equipped with an open concept kitchen and high-end appliances. The living-dining room, with direct access to a private covered terrace, invites you to enjoy unforgettable moments overlooking the garden, the pool and the Mediterranean horizon. Among its features are air conditioning, electric radiators, double glazing, fitted wardrobes and alarm system, ensuring comfort and safety throughout the year. The building has an elevator and belongs to a gated community with gardens and communal pool, offering a safe and quiet environment. In addition, the property includes parking space and private storage room. The location is unbeatable, with easy access to all services, shopping center, restaurants, schools and public transport, as well as the proximity to the beach and the urban center. This apartment represents an exceptional opportunity for those who want to enjoy life in Marbella and the whole Costa del Sol, combining luxury, comfort and an incomparable natural environment.



Kenmerken:

Extra's

Overdekt terras
Tillen
Nabij vervoer
Privé Terras
Dubbele beglazing
Inbouwkasten
Bijkeuken

Uitzicht

Zeezicht
Mountain Bekeken
Weids
Garden Views
Pool Bekeken

Zwembad

Gemeenschappelijk zwembad

Tuin

gemeenschappelijke tuin

Energiebeoordeling

D

Zonorientatie

zuiden

Ligging

Dicht bij strand
Dichtbij zee
Dicht bij winkels
Dichtbij stad
Dichtbij scholen

Meubilering

Volledig gemeubileerd

Beveiliging

Omheind complex
Alarmsysteem

CO2 Emission Rating

C

Klimaatbeheersing

Airconditioning

Huidige Staat

Uitstekende conditie

Keuken

Kitchen-Lounge

Parkeergelegenheid

private Parking