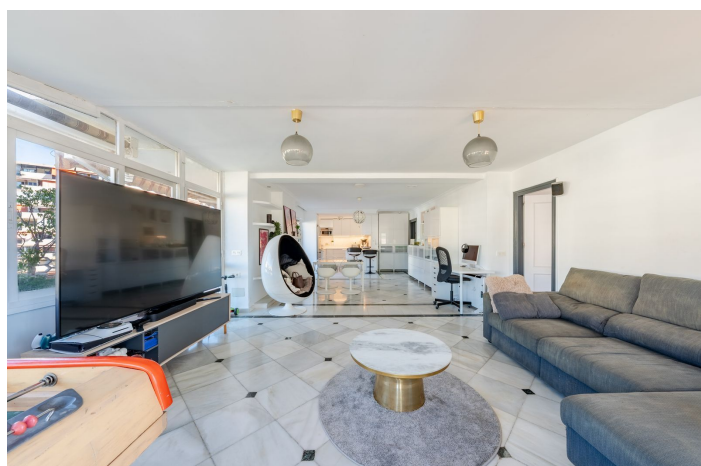
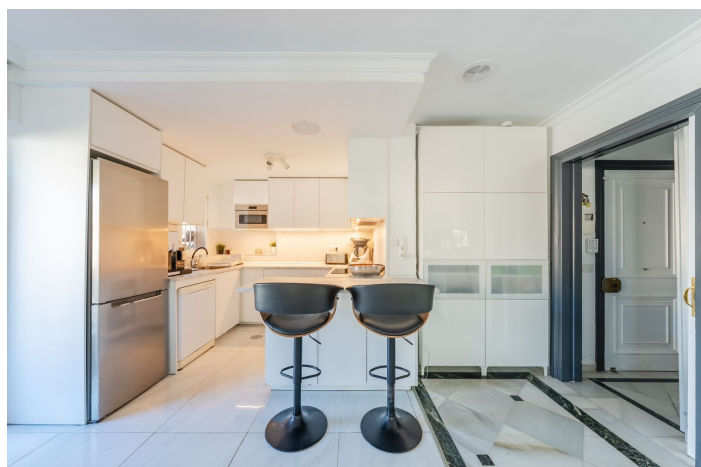




Middle Floor Apartment for sale in Marbella, Marbella

750,000 €

Reference: R5232337 Bedrooms: 3 Bathrooms: 1 Build Size: 114m² Terrace: 110m²





Costa del Sol, Marbella

This bright three-bedroom flat with a bathroom is located in the best area of Marbella, just 100 metres from the beach and very close to two of the most iconic landmarks in the area: the prestigious Gran Hotel Don Pepe and the famous Cappuccino café. An excellent location surrounded by all the necessary amenities: schools, parks, cafés, banks, pharmacies and hospitals. The flat stands out for its spacious and spectacular 120 m² terrace, a true outdoor oasis with panoramic views of the sea and mountains, ideal for creating different atmospheres: a chill-out area, an outdoor dining area, a solarium or a recreational space. The flat is located on the fifth floor and has a wonderful south, west and north orientation, which guarantees natural light throughout the day and unforgettable sunsets. The spacious and elegant living room with dining area includes a modern and functional open kitchen, designed with comfort and style in mind. From this main part of the flat, you can walk directly onto the large terrace, which creates a sense of continuity and spaciousness, making this space the heart of the flat. The property also includes a convenient parking space and storage room, providing additional practicality and storage space. This unique flat combines an excellent location, comfort and large outdoor spaces, ideal for enjoying the best lifestyle in Marbella.



Features:

Features

Covered Terrace
Lift
Near Transport
Private Terrace
Storage Room
Fitted Wardrobes

Setting

Beachside
Close To Golf
Close To Port
Close To Sea
Close To Shops
Close To Town
Close To Schools
Town

Security

Gated Complex
Entry Phone

Category

Investment
Resale

Orientation

North
South
West

Condition

Recently Refurbished

Parking

Garage

Views

Sea
Mountain
Urban

Kitchen

Fully Fitted

Utilities

Electricity
Drinkable Water