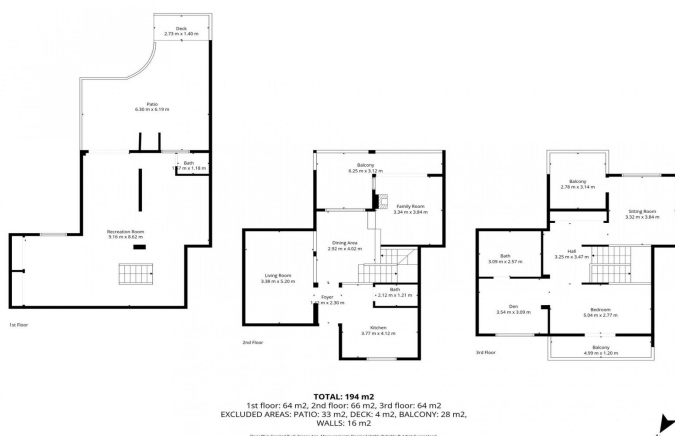




Geschakelde Woning te koop in Monda, Monda

349.000 €

Referentie: R5248144 Slaapkamers: 3 Badkamers: 2 Perceelgrootte: 237m² Terras: 32m²





Sierra de las Nieves, Monda

Upon entering, you'll find a split-level living and dining area with a cozy fireplace, a fully fitted kitchen, and a guest toilet. From the living room, you have direct access to a lovely terrace with beautiful views—perfect for enjoying morning coffee or evening sunsets. Originally, the area by the entrance served as a private garage, but it now functions as a showroom/lounge. This versatile space could easily be transformed into an additional bedroom, a home office, or a snug TV room. The current owner has thoughtfully redesigned the entrance level to create an open, light-filled layout that allows natural brightness to flow throughout the home. Upstairs, the property features an exceptionally large master suite that could be reconfigured into up to three bedrooms simply by adding room dividers. A second bathroom could also be installed if desired. This level offers two inviting terraces—one for sun, one for shade—both with pleasant views of the surrounding landscape. A standout feature of this townhouse is the expansive semi-basement, currently used as a creative studio. The possibilities here are endless: a hobby or craft room, dance studio, private guest quarters, cinema room, or a spacious home office. From this level, you enjoy access to a generous garden patio, ideal for entertaining, outdoor dining, and BBQ gatherings. The house forms part of a well-kept community with a friendly international atmosphere, offering a welcoming environment to residents of all backgrounds. This townhouse is an excellent choice for those seeking a peaceful retreat with authentic Andalusian charm, yet within walking distance to Monda's amenities and just a short drive from Marbella and the coast. Perfect as a permanent residence, holiday home, or investment opportunity.



Kenmerken:

Extra's

Nabij vervoer

Privé Terras

Inbouwkasten

Kelder

Uitzicht

Mountain Bekeken

Weids

Country Bekeken

Garden Views

Tuin

gemeenschappelijke tuin

Zonorientatie

zuiden

Ligging

Dicht bij winkels

Dichtbij stad

Dichtbij scholen

Parkeergelegenheid

private Parking

Klimaatbeheersing

Airconditioning

Open haard

Meubilering

optioneel Furniture

Voorzieningen

Elektriciteit