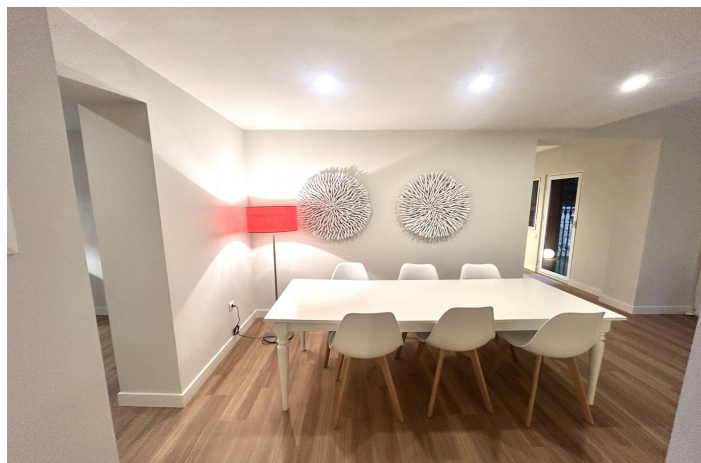




Semi-Vrijstaande Villa te koop in Atalaya, Estepona

690.000 €

Referentie: R5251573 Slaapkamers: 4 Badkamers: 3 Plotgrootte: 250m² Perceelgrootte: 285m² Terras: 100m²





Costa del Sol, Atalaya

Large house ready to go in to live; From the beautiful front garden and through a stone staircase you access the entrance of the house open to a large living room with fireplace that has plenty of light all day as it is south orientation; on this floor there is also a separate kitchen, with small dining room, that gives the access garden, a guest toilet and a small extra room perfect for office, or for room to play, from which you pass to the private garage covered with The house is the Lomas de Monte Biarritz one of the most beautiful and well-kept urbanizations in the area; On the first floor there are 3 bedrooms, the master with en-suite bathroom, closet area and access to two terraces one of them huge solarium type; , the other two rooms also have fitted wardrobes and share another bathroom; the house has a more attic floor where a small room is located with a large terrace that enjoys wide views. The house has recently been completely renovated by architects; so this list to enter to live and by its orientation, has a lot of light all day; the community is very well maintained and managed. It has large and beautiful gardens and 2 swimming pools, one of adults and another of children; It is a perfect house for families with children, since there is a lot of atmosphere; and it is perfect for living all year round; since it is next to all services: The Guadalmina Shopping Centre also the Atalaya and San José schools in Guadalmina are next to it; Call us and we teach you!!



Kenmerken:

Extra's

Overdekt terras
Nabij vervoer
Privé Terras
Marmeren vloeren
Dubbele beglazing
Inbouwkasten
Zonbank
Speelzaal
Bijkeuken
Houten vloeren

Uitzicht

Weids
Country Bekeken
Garden Views
Pool Bekeken

Zwembad

Gemeenschappelijk zwembad

Tuin

private Garden

Energiebeoordeling

C

Zonorientatie

zuiden

Ligging

Dichtbij golfbaan
Dichtbij haven
Dichtbij zee
Dicht bij winkels
Dichtbij stad
Dichtbij scholen

Meubilering

Ongemeubileerd

Beveiliging

Omheind complex
Elektrische rolluiken

CO2 Emission Rating

C

Klimaatbeheersing

Open haard

Huidige Staat

Goede conditie
Uitstekende conditie
Onlangs gerenoveerd
Nieuwbouw

Keuken

Gedeeltelijk ingerichte keuken

Parkeergelegenheid

private Parking