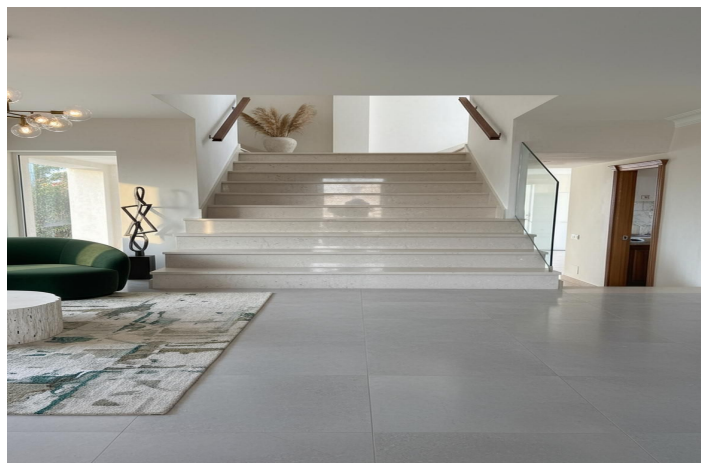




Detached Villa for sale in Marbella, Marbella

1,350,000 €

Reference: R5255524 Bedrooms: 8 Bathrooms: 8 Plot Size: 500m² Build Size: 515m² Terrace: 545m²





Costa del Sol, Marbella

Investment & Development Opportunity which requires renovation (please note these pictures are renders) Are you seeking a high-yield real estate opportunity in one of Spain's most exclusive enclaves? this is more than a luxury residence it is a versatile investment asset with exceptional return potential in Marbella's thriving premium market. With a strategic renovation, ROI can be realized within an estimated 6–9 months post-completion. Key Investment Highlights Outstanding Versatility The property can function as a single luxury villa or be reconfigured into a boutique wellness-focused hotel, catering to Marbella's growing demand for nature-driven, high-end hospitality. Compelling Value Proposition With 558 m² of built area and a comprehensive suite of luxury amenities, this villa is among the most competitively priced properties in the area—offering significant upside compared to neighboring developments such as Palo Alto. Prime & Exclusive Location Located in Marbella Heights, directly opposite Palo Alto and within the Sierra de las Nieves National Park, the villa offers a rare combination of privacy, natural surroundings, and immediate access to Marbella's lifestyle and infrastructure. Security & Privacy Part of an exclusive community of just six residences, accessed via a single private road, ensuring discretion and peace of mind. Property Overview • Plot Size: 1,859 m² • Built Area: 515 m² • Floors: 3 • Accommodation: 8 Bedrooms | 8 Bathrooms • Amenities: • Private swimming pool • space for a Spa, gym, sauna & steam room • space for Wine cellar • space for Bar & games room Lifestyle & Connectivity • La Cañada Shopping Mall: 6 minutes • Marbella City Centre: 9 minutes • Puerto Banús: 12 minutes • Beaches: 9 minutes



Features:

Features

Private Terrace
Storage Room
Ensuite Bathroom
Double Glazing
Gym
Utility Room
Basement

Setting

Close To Sea
Close To Shops
Close To Town
Close To Schools

Furniture

Not Furnished

Security

Safe

Category

Investment

Climate Control

Fireplace

Condition

Renovation Required

Kitchen

Partially Fitted

Parking

Private
Covered

Views

Sea
Pool
Forest

Pool

Private

Garden

Private

Utilities

Electricity
Drinkable Water
Gas