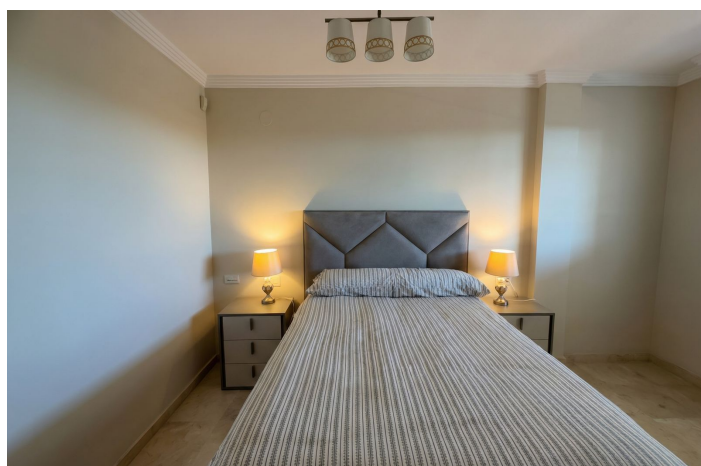




Ground Floor Apartment for sale in Río Real, Marbella

450,000 €

Reference: R5274094 Bedrooms: 2 Bathrooms: 2 Build Size: 120m² Terrace: 20m²





Costa del Sol, Río Real

Location Set in one of Marbella's most exclusive and peaceful residential areas, Las Lomas de Río Real, this elegant ground-floor apartment perfectly combines comfort, space, and a privileged setting. **The Property** The home offers 120 m² of built space, thoughtfully laid out to provide bright, generous interiors, complemented by a 20 m² private terrace ideal for outdoor living. **Terrace & Communal Areas** The terrace enjoys direct access to the communal swimming pool, making this property ideal for embracing the Mediterranean lifestyle year-round—whether relaxing with family or entertaining friends. **Interior Layout** The apartment features two bedrooms and two full bathrooms, including a master en-suite that ensures privacy and comfort. The spacious and inviting living room opens directly onto the terrace, creating a seamless flow between indoor and outdoor spaces. **Additional Features** A private garage space is included—an essential and valuable asset in this sought-after area. **Surroundings** Ideally located just minutes from Río Real Golf Course, Costa del Sol Hospital, Marbella's finest beaches, and renowned restaurants such as Trocadero, with excellent access to Marbella town centre. **Ideal For** A perfect choice as a primary residence, holiday home, or investment property, set within an exclusive environment where tranquillity and quality of life are assured.



Features:

Features

Covered Terrace
Lift
Satellite TV
Marble Flooring
Fitted Wardrobes
Basement

Views

Mountain
Garden

Pool

Communal

Garden

Communal

Category

Holiday Homes
Investment
Golf
Resale

Orientation

North
South

Setting

Close To Golf
Urbanisation

Furniture

Optional

Security

Gated Complex
Safe

Climate Control

Cold A/C
Hot A/C
Fireplace

Condition

Recently Refurbished

Kitchen

Fully Fitted

Parking

Underground