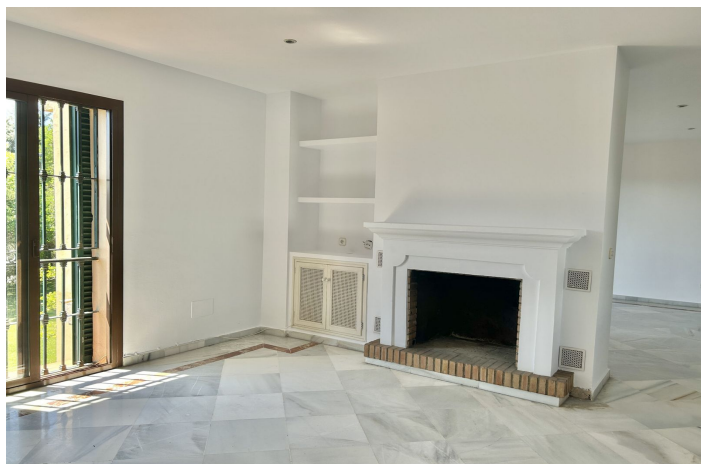




## Middle Floor Apartment for sale in Sotogrande Alto, Sotogrande

410,000 €

Reference: R4717366 Bedrooms: 4 Build Size: 229m<sup>2</sup>





---

## Costa de la Luz, Sotogrande Alto

Spacious corner townhouse located in the Urbanisation the Encinar de Sotogrande very close to the entire Sotogrande service area. On the ground floor is the large garage with a storage area. The house is accessed through an exterior staircase that give to an entrance porch. The first floor of the house consists of: entrance hall, courtesy toilet, kitchen with separate laundry area, bright and spacious living room with fireplace with access to a covered terrace overlooking the garden with fruit trees. The 4 bedrooms are on the second floor. The master bedroom has en suite bathroom, dressing room and access to the terrace. The other three bedrooms share the four bathrooms. The urbanization has beautiful common green areas and parking areas for guests. Next to the Encinar Hotel, Marisol Shopping Centre; Various restaurants, close to the village and the services; easy access to the Sotogrande International School. Middle Floor Apartment, Sotogrande Alto, Costa del Sol. 4 Bedrooms, 2.5 Bathrooms, Built 229 m<sup>2</sup>. Setting : Commercial Area, Close To Golf, Close To Port, Close To Shops, Close To Sea, Close To Schools, Urbanisation. Orientation : South. Condition : Renovation Required. Climate Control : Fireplace. Views : Mountain, Country, Panoramic, Garden, Street. Features : Covered Terrace, Fitted Wardrobes, Near Transport, Private Terrace, Utility Room, Ensuite Bathroom, Marble Flooring. Furniture : Not Furnished. Garden : Communal. Security : 24 Hour Security. Parking : Private. Utilities : Electricity, Drinkable Water. Category : Golf, Investment.



## Features:

### Features

Covered Terrace  
Near Transport  
Private Terrace  
Ensuite Bathroom  
Marble Flooring  
Fitted Wardrobes  
Utility Room

### Views

Mountain  
Panoramic  
Country  
Garden  
Street

### Furniture

Not Furnished

### Parking

Private

### Orientation

South

### Climate Control

Fireplace

### Setting

Close To Port  
Close To Sea  
Close To Shops  
Close To Schools

### Condition

Renovation Required

### Garden

Communal

### Security

24 Hour Security