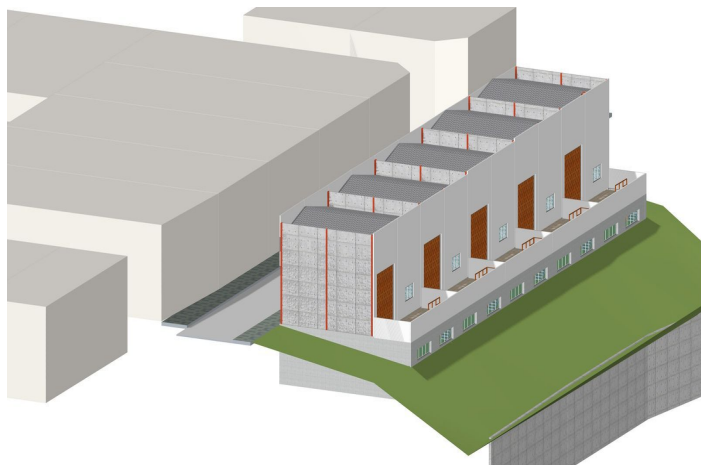
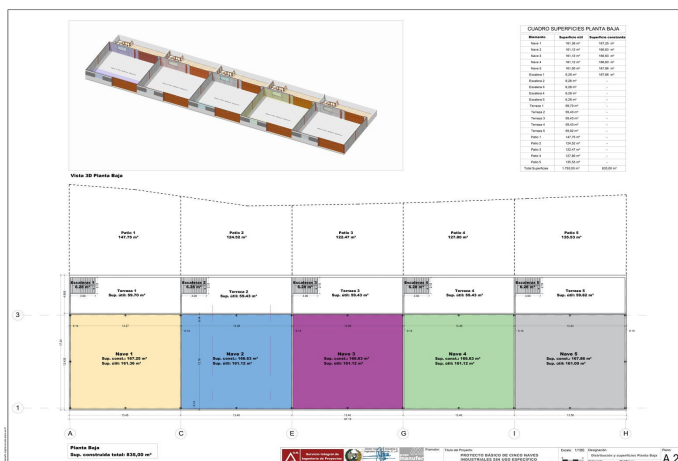
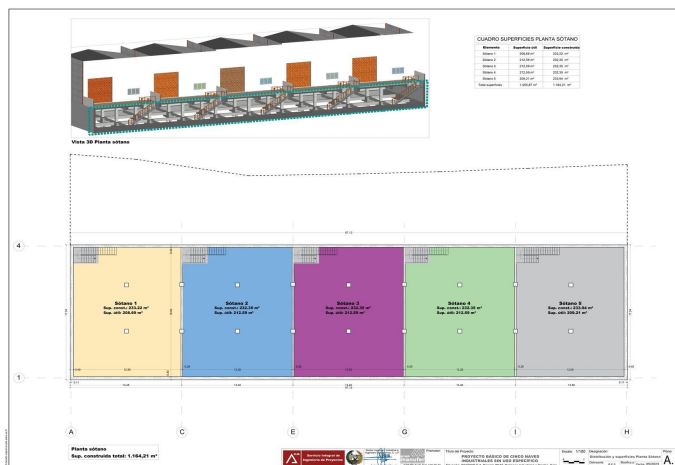


Warehouse for sale in Coín, Coín

380,000 €

Reference: R4891033 Build Size: 400m²





Valle del Guadalhorce, Coín

Unique opportunity in La Trocha Industrial Estate, Coín!

New construction industrial warehouse for sale with 400 m² built.

The warehouse has two spacious and functional rooms, a first floor with 167m and a basement of 233m, ideal for various industrial or logistical activities.

Its strategic location at street level in one of the most sought-after industrial estates in the area. Ensures excellent visibility and accessibility.

Don't miss this opportunity and contact us for more information!



Features:

Features

Basement

Views

Mountain

Setting

Commercial Area

Close To Town

Village

Condition

New Construction

Category

Investment

Off Plan