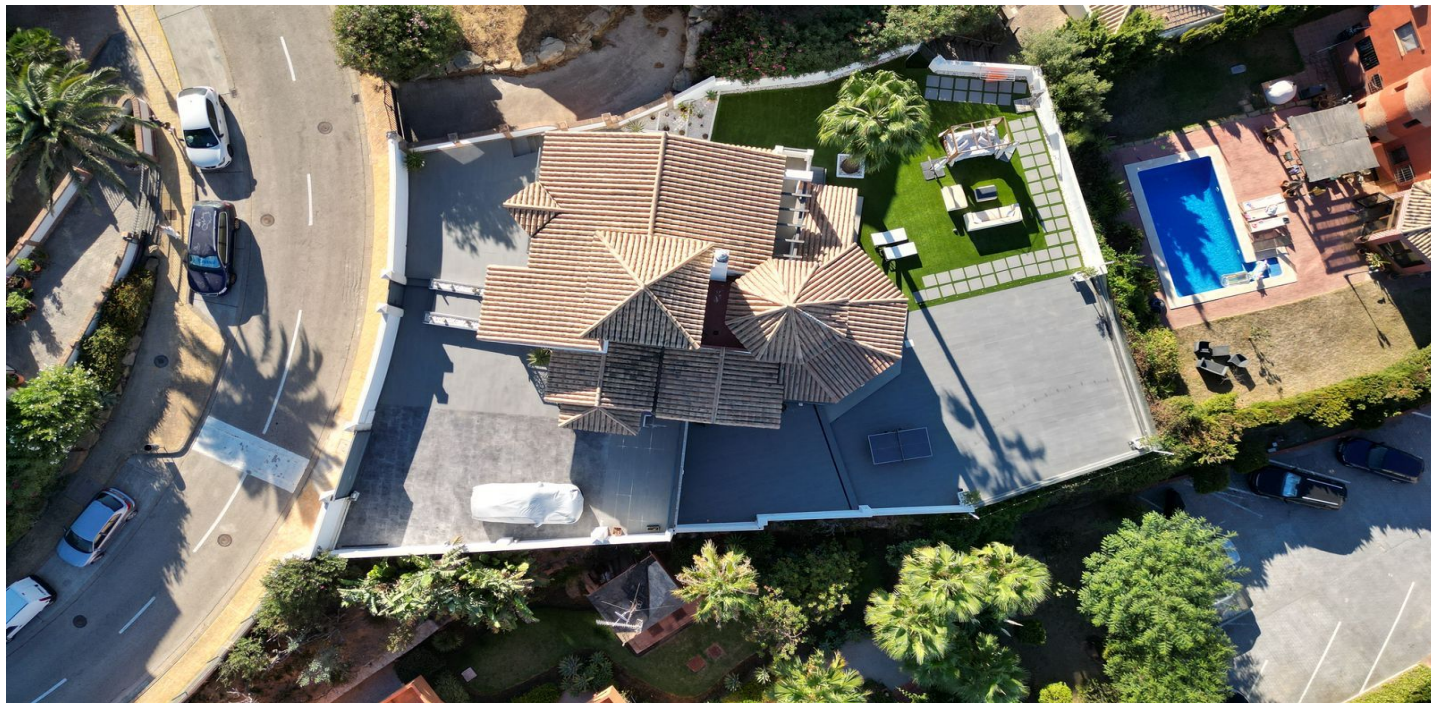




## Detached Villa for sale in La Línea de la Concepción, Campo de Gibraltar

760,000 €

Reference: R4888501   Bedrooms: 4   Plot Size: 800m<sup>2</sup>   Build Size: 292m<sup>2</sup>   Terrace: 200m<sup>2</sup>







---

## Costa de la Luz, La Alcaidesa

Villa on the seafront of La Alcaidesa. Its impressive views are focused on the La Alcaidesa Lighthouse, the sea and in the background the Rock of Gibraltar.

Its almost 300 sqm are distributed over 4 floors. The entrance leads to a hall from which you enter a separate kitchen, a guest toilet and a living room with access to the terrace that offers the best views of the lighthouse and the sea. On the first floor there is a large bedroom of about 50 sqm with a dressing room, en-suite bathroom and its own terrace... The ground floor consists of 2 double bedrooms with a bathroom, one of which has direct access to the garden. The -1 floor has a splendid cinema room, with a screen and 6 large leather armchairs, a room that could easily be converted into a 4th bedroom. At the level of the garden, you finally access the wine cellar area, a large space with a kitchen, dining room, bar, toilet and pool table, the ideal place for meetings with friends and family. The garden, with artificial grass, offers the possibility of building a spacious pool of about 4x8 m2 and also has a porch with barbecue. The design of the house is elegant and modern, characterized by the luminosity in each and every one of its rooms. It is worth visiting, for its location, its perfect state of conservation and views. For dog lovers it is also the ideal place, not only is it located a few meters from the beach but there is very close, about 100 meters away, a landscaped park, with benches to walk and enjoy the views of this impressive coast.



## Features:

### Features

Covered Terrace  
Private Terrace  
Storage Room  
Ensuite Bathroom  
Fitted Wardrobes  
WiFi  
Games Room  
Bar  
Barbeque  
Basement

### Views

Sea  
Panoramic  
Garden  
Golf  
Beach

### Pool

Communal

### Utilities

Electricity  
Drinkable Water  
Telephone  
Gas

### Orientation

South

### Setting

Close To Sea  
Beachfront

### Garden

Private  
Easy Maintenance

### Category

Beachfront  
Golf  
Contemporary

### Climate Control

Pre Installed A/C

### Condition

Excellent

### Parking

Private