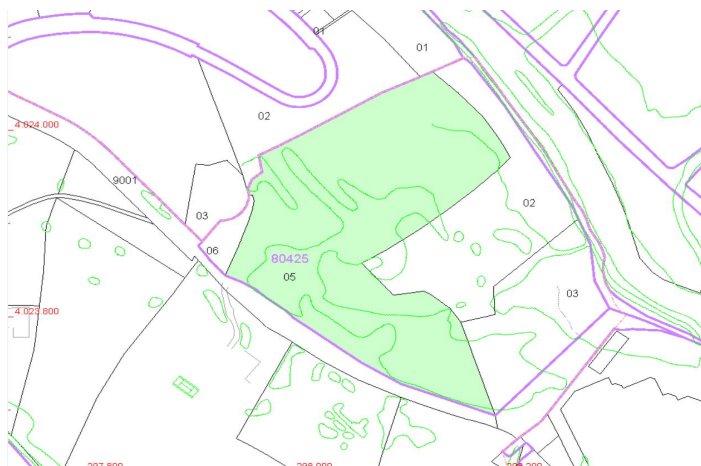




Land for sale in Manilva, Manilva

4,500,000 €

Reference: R4849609 Plot Size: 92,105m²





Costa del Sol, Manilva

The plot is urbano. This plot offers panoramic sea views and is located in a new living area on the Costa del Sol. With plenty of possibilities to build, it's ideally situated near a range of amenities, providing both convenience and stunning coastal scenery. Sectorized Urbanizable Land. Sector AL-U-3B "MARTAGINA ROAD". Gross buildable area: 0.33 m²t/m²s. Residential Use. System of Action: COMPENSATION. Max. homes: 25 homes/Ha. Partial Planning Plan for Sector AL-U-3B "CAMINO DE MARTAGINA" definitively approved on 12/30/2010, (not published in the BOP of Malaga). CHARACTERISTIC USE: Residential: Intensive (70%), Extensive Residential (30%) and Commercial. The buildability of the plot according to percentage of participation in the sector (92.03%) is as follows: Intensive Residential: 15,483. 00 m²t (140 homes), Extensive Residential: 11,348. 82 m²t (65 homes), Commercial: 522. 96 m²t. This plan has been approved, but not published. Please note: Pending completion of the urban planning process and contribution to the urbanisation costs.



Features:

Features

Near Transport

Near Church

Setting

Beachside

Close To Shops

Close To Town

Suburban

Close To Forest

Orientation

South

Views

Sea

Panoramic