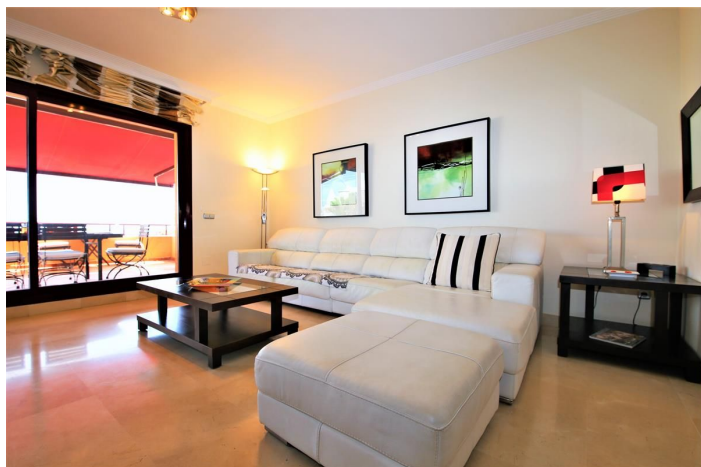




Middle Floor Apartment for rent in Estepona, Estepona

1,295 - 2,095 €

Reference: R3932581 Bedrooms: 3 Bathrooms: 2 Plot Size: 155m² Build Size: 155m² Terrace: 35m²





Costa del Sol, Estepona

An amazing apartment perfect for families wanting to stay right next to the beach and not so far away from Estepona port. It has three bedrooms, two bathrooms, living room with dining area, a fully fitted kitchen, cloakroom and a south facing balcony with sea views. A very spacious and wonderfully decorated property with high speed internet and a central air-con system in all bedrooms and living room. The master bedroom has a super king sized bed, en-suite bathroom and direct access to the large balcony. The second bedroom is a twin and the third bedroom is also a twin. The large balcony is covered with a dining table for six, a comfortable seating area and two sunbeds to relax on and enjoy the wonderful views of the sea. This property provides a high speed internet connection with an international TV streaming package just for the living room's 45" flat screen. The other flat screen located in the master bedroom only provides Spanish channels. A fully fitted kitchen is also available for your use. The property provides a private parking space in the underground garage and there is a large fenced community swimming pool for adults and a separate children's pool. All in all, a lovely apartment in a very popular complex. The landscaped gardens of the urbanisation are well maintained and are a joy to walk through to gain access to the quiet beaches of this sea front development called Riviera Andaluza. It's located on the western outskirts of Estepona making it easy to get into town and port with all the facilities and amenities they provide. Just a short 25 min walk to Supersol supermarket and located 2.5 KM west of Estepona town centre. Estepona port is only a 25 minute walk along the beach passing through the famous Playa del Cristo beach with its two large beach bars, ideal for families and friends.



Features:

Features

Lift
Near Transport
Barbeque

Views

Sea
Garden
Pool

Garden

Communal

Orientation

South

Setting

Close To Port
Close To Sea
Close To Shops
Close To Town

Parking

Garage
Communal
More Than One

Climate Control

Air Conditioning

Pool

Communal

Category

Golf