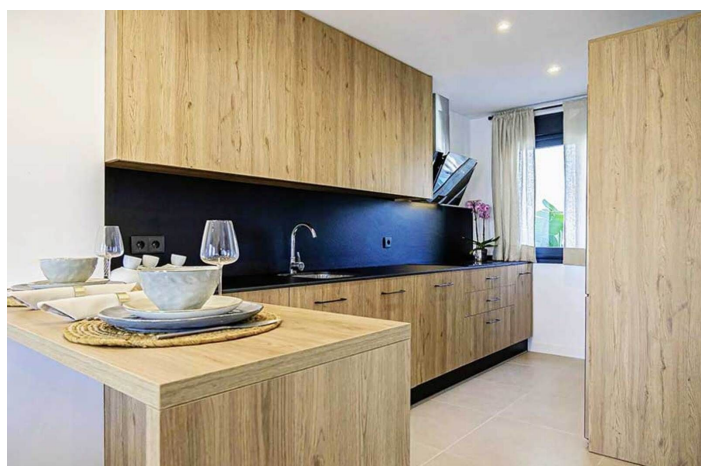




Townhouse for rent in New Golden Mile, Estepona

1,500 - 2,000 €

Reference: R4713475 Bedrooms: 3 Bathrooms: 3 Build Size: 150m² Terrace: 60m²





Costa del Sol, New Golden Mile

AVAILABLE ONLY FOR JULY, AUGUST - call for availability

SLEEPS 6.

A brand new 3 bedroom 3 bathroom townhouse with large basement area. A lovely property located in El Campanario which is famed for its wonderful golf course and club house where you will find a super restaurant, gym, indoor and outdoor pool and spa area along with a hairdresser and beauticians. The development has a salt water pool and an additional pool for children. The house is lovely and bright. There is a large open plan living and dining room with american style kitchen. Doors lead out onto a large East facing terrace where you will have early to mid day sun. On this level there is another terrace at the front that is West facing where you will get afternoon and evening sun. There is a bedroom with a single bed OR double bed and shower room on this level.

Upstairs you will find the master bedroom with a double bed and en suite shower room with a little terrace, and the third bedroom with twin beds and with en suite bathroom.

Up another flight of stairs you will find a fabulous roof terrace with lounging facilities and views of the mountains.

In the basement you will find a chill out play area and lounge with work desk, perfect for families with children. From here you can enter the 2 parking spaces which are secure and underground.

Puerto Banus is a 10 minute drive

Estepona town is a 10 minute drive

San Pedro Alcantara is a 5 minute drive

Local shops in Diana Park are a 2 minute drive

The property is surrounded by golf courses in El Campanario, El Paraiso, Atalaya and Guadalmina.



Features:

Features

Private Terrace
Ensuite Bathroom
Double Glazing
Fitted Wardrobes
Solarium
WiFi

Games Room
Basement

Views

Mountain
Panoramic
Golf
Urban

Pool

Communal
Children`s Pool

Security

Gated Complex
Electric Blinds
Entry Phone

Orientation

East
South
West

Climate Control

Air Conditioning
Cold A/C
Hot A/C

Setting

Close To Golf
Close To Shops
Suburban

Condition

Excellent
New Construction

Furniture

Fully Furnished

Kitchen

Fully Fitted

Parking

Underground

Category

Holiday Homes
Golf
Luxury
Contemporary